



**161354**

BASCHE, TERRA.

Lush Wall, 2018

65.5 x 88 x 3 inches | Mixed media

Unsigned



**161353**

BERTOIA, HARRY.

Spray, c. 1979

37 x 10 x 10 inches | Bronze and

Unsigned



**161334**

**NOT FOR SALE**

BORTOLAZZO, KEN.

Cluster, 2017

70 x 20 x 20 inches | Stainless steel



**161294**

CHURCHILL-JOHNSON, DOROTHY.

Roadside in March,

54 x 72 inches | Oil on canvas

Signed on back



**161302**

CONNALLY, CONNIE.

Summer Tangle, 2018.

30 x 30 inches | Oil on canvas

Signed

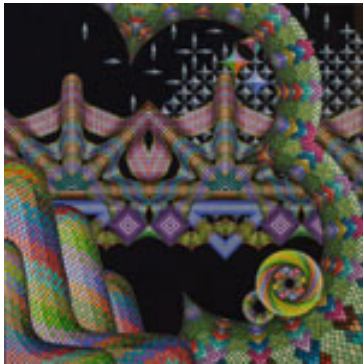


**161315**

COOLEY, DAVID.

Cusp, 2018

24 x 24 inches | Mixed media on  
Signed



**161892**

COOLEY, DAVID.

Untitled, 2018

36 x 36 inches | Mixed media on  
Signed



**160820**

GOLDYNE, JOSEPH.

SMALL FALL 4, 2016/17

7 x 7 inches | Mixed media on paper  
Signed lower center



**161344**

GUZYTE, INGA.

Camo Love Flower, 2017

22.625 x 22.625 x 1.5 inches | Wood/  
Signed on back



**161342**

HAGGERTY, JAMES.

Mare Creaturae #1, 2018

7 x 9 x 9 inches | Ceramic  
Signed



**161341**

HAGGERTY, JAMES.

Vita Nova #3, 2018

18 x 7 x 7 inches | Ceramic

Signed



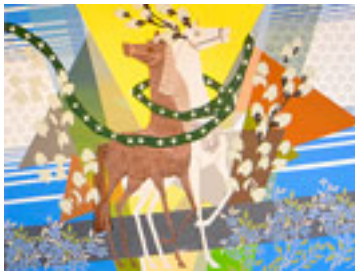
**161340**

HAGGERTY, JAMES.

Mare Creaturae #2, 2018

27 x 7 x 7 inches | Ceramic

Signed



**161130**

HECKES, ROBERT.

Seven Steps to Heaven, 2017

72 x 96 inches | Mixed media on

Signed on back



**161304**

KLEIN, MARY-AUSTIN.

Kangaroo Island Summer, 2017

12 x 36 inches | oil on Duralar

Signed



**161337**

MCDONNELL, SUSAN.

Barn Swallows, 2018

20 x 18 inches | Oil on panel

Signed



**157315**

NESCH, ROLFE.

Red Blooms, 1928

28 x 18 inches | Mixed media on

Signed lower right



**151185**

PERKO, ANGELA.

Moonlit Path with Jimson Weeds, 2007.

24 x 48 inches | Oil on canvas

Signed lower right



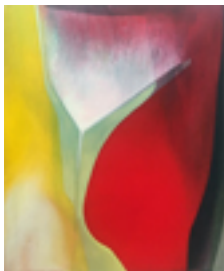
**161301**

PITCHER, HANK.

Wild Radish, 2018

36 x 48 inches | Oil on canvas over

Signed lower left



**161300**

RENDON, MARIA.

Five Minutes Til Midnight, 2018

17 x 14 inches | Acrylic on panel

Signed on back



**160067**

SEEDS, ELISE.

Emerging, c. 1936

15.5 x 10 inches | Mixed media on

Signed lower right



**161248**

SHEETS, MILLARD.

New Mexico, c. 1944

15 x 22 inches | Watercolor on

Signed lower left



**159921**

STRASBURG, NICOLE.

Spring Shoreline,

24 x 24 inches | Oil on birch panel

Signed on back



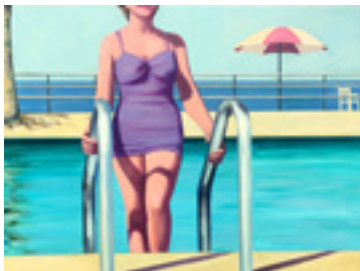
**158539**

SWIGGETT, JEAN DONALD.

Apple for the Teacher, 1980

7 x 13 inches | PrismaColor on paper

Signed lower right



**161335**

SYLVESTER HARRIS, TRACEY.

Beachside Pool, 2018

36 x 48 inches | Oil on canvas

Signed