



160196

ABBOTT, MEREDITH BROOKS.

Floral Vase with Apples, 2016

20 x 16 inches | Oil on canvas

Signed



160185

ARENO, JOSEPH.

Working on Casa de la Guerra, c. 1991

24.25 x 37 inches | Pastel on paper

Signed lower right



160213

ASKEW, TONY.

Game plan, 2016

11 x 14 x 4.5 inches | Mixed media

Signed



151524

BERMAN, EUGENE.

Announcement of Opening at Julian Levy Gallery #1, c.

10.875 x 7.5 inches | Ink on paper

Signed



151525

BERMAN, EUGENE.

Announcement of Opening at Julian Levy Gallery #2, c.

10.875 x 7.5 inches | Ink on paper

Signed



152749

BERMAN, EUGENE.

Mother of Pearl, c. 1930s

4 x 4 inches | Other

Unsigned



160193

BOREIN, ED.

End of the Race (Second State of Two),

7.5625 x 11.875 inches | Etching

Signed



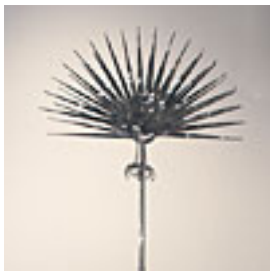
160353

BOREIN, ED.

Sioux Chief,

7.875 x 11.875 inches | Etching

Signed



156648

BORTOLAZZO, KEN.

Estacas, 2012

80 x 32 x 32 inches | Stainless steel

Signed



160178

BRUNNER, PHOEBE.

De La Cresta,

45 x 33 inches | Oil on canvas

Signed



127605

CARMEAN, HARRY.

Champagne Toast , 2003.

24 x 48 inches | Oil on canvas

Signed lower right



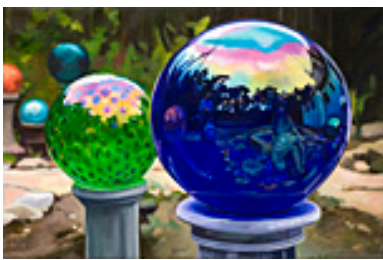
160200

CAVAT, IRMA.

Nude, c. 1960s

50 x 42 inches | Oil on canvas

Signed



160191

CHIDLAW, PATRICIA.

Gazing Globe Garden, 2016

15 x 22 inches | Oil on linen

Signed



114118

COOPER, COLIN CAMPBELL.

The Alcazar, Segovia, c. 1925

18 x 14.875 inches | Oil on board.

Signed lower right.



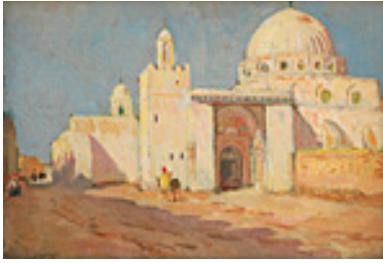
150157

COOPER, COLIN CAMPBELL.

Chartres Cathedral,

26 x 20 inches | Gouache on paper

Signed lower left



150304

COOPER, COLIN CAMPBELL.

Mosque Sioli Ocbdebkasar, 1929

10.125 x 13.625 inches | Gouache

Signed lower left



153267

COOPER, COLIN CAMPBELL.

Santa Barbara Sunset, Nov. 3, 1926.

5 x 7 inches | Gouache on paper.

Signed lower right.



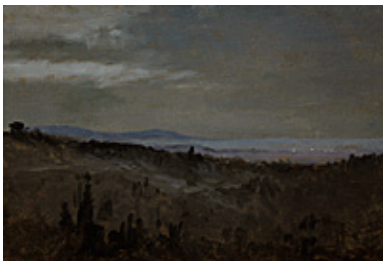
155346

DABO, LEON.

View from the valley of Aix, Provence, 1951

10.5 x 8.625 inches | Oil on board

Signed lower right



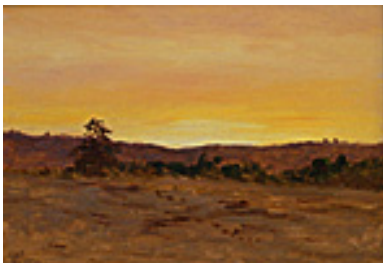
101201

DE FOREST, LOCKWOOD.

Moonlight over Santa Barbara City Lights , ND

9.75 x 14 inches | Oil on board

Unsigned



103428

DE FOREST, LOCKWOOD.

Santa Barbara Christmas -Orange Sunset with Large

9.75 x 14 inches | Oil on board.

Signed lower left.



105261

DE FOREST, LOCKWOOD.

Moonlight Over Cloudy Pacific Sky, February 10, 1906.

9.5 x 14.25 inches | Oil on Artists

Signed lower left.

105574

DE FOREST, LOCKWOOD.

View From Romero Ridge to the Rincon, December

9.75 x 14 inches | Oil on board.

Signed lower right.

106112

DE FOREST, LOCKWOOD.

Winter Tree Study,

9.5 x 14.25 inches | Oil on board.

Unsigned.



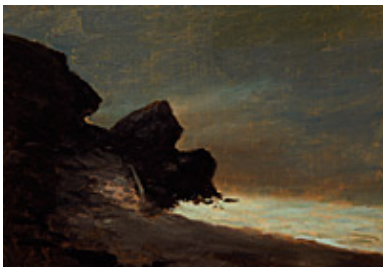
150248

DE FOREST, LOCKWOOD.

Palm Trees and Mountains, Nile Delta, 1876 (December

10.125 x 12.625 inches | Oil on

Signed lower left.



153578

DE FOREST, LOCKWOOD.

Moonlight Behind Castle Rock, Feb 6, 1906

9.875 x 14.25 inches | Oil on artist's

Signed lower left



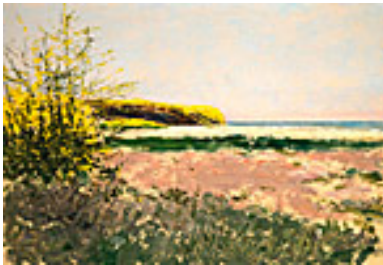
153673

DE FOREST, LOCKWOOD.

Santa Barbara's Channel Islands - Deep Blue Pacific, Feb

9.75 x 14 inches | Oil on artist's card

Signed lower left



153726

DE FOREST, LOCKWOOD.

Wild Mustard and Fennel Along the Beach, May 2, 1927

9.625 x 14 inches | Oil on artist's card

Signed lower left



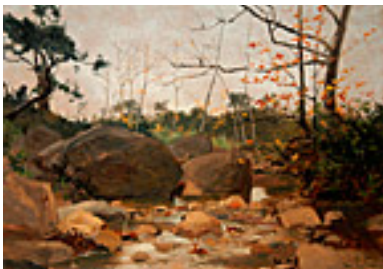
153822

DE FOREST, LOCKWOOD.

Rincon Peak from Sandyland Beach South of Santa

9.625 x 14 inches | Oil on artist's card

Signed lower left



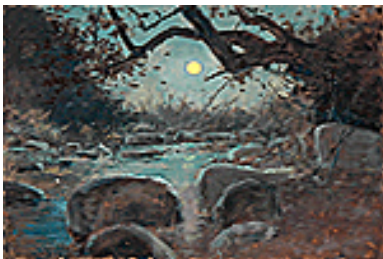
153825

DE FOREST, LOCKWOOD.

Large Rocks at Mission Creek, December 20, 1902

9.625 x 14 inches | Oil on artist's card

Signed lower left



153899

DE FOREST, LOCKWOOD.

Full Moon and Running Creek, ND

9.75 x 14 inches | Oil on artist's card

Unsigned



156438

DE FOREST, LOCKWOOD.

Mission Santa Barbara - Riviera View, December 25, 1905

9.625 x 14.125 inches | Oil on artist's

Signed lower right



160207

DOLE, WILLIAM.

Hero Image, 1962

12 x 20 inches | Collage

Signed lower right



160512

DOLE, WILLIAM.

Madison Avenue, 1965

10 x 23.5 inches | Collage

Signed lower right.



150324

FORD, HENRY CHAPMAN.

Santa Barbara Mission, 1887

3.875 x 8 inches | Etching

Signed lower right



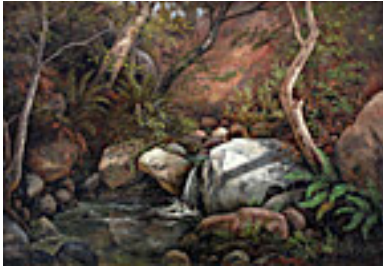
150325

FORD, HENRY CHAPMAN.

Santa Barbara Mission - Courtyard Garden, 1888

5 x 7 inches | Etching

Signed lower right



154226

FORD, HENRY CHAPMAN.

Waterfall, 1885

16.5 x 23.625 inches | Oil on board

Signed lower right



160231

FORD, JULIA.

PLY (Spira), 2009

6.125 x 3.125 x 2.375 inches | Felted

Signed



160233

FORD, JULIA.

TAP III (Globulus bicornis), 2006

15 x 3 x .875 inches | Felted Wool

Signed



160234

FORD, JULIA.

CURL (ab initio), 2006

1.4375 x 3.3125 x 3.125 inches |

Signed



160190

FRAME, ROBERT.

Chair on the Balcony, c. 1975

18 x 20 inches | Oil on canvas

Signed



160215

GOODMAN, DANE.

Swimmer, 2013

36 x 16 x 4 inches | Mixed media

Signed



160216

GOODMAN, DANE.

water walking, day, 2013

26.5 x 19 inches | Trace monotype

Signed



159620

GOWEN, ROBIN.

The Massing Hills II, 2015

12 x 24 inches | Oil on board

Signed lower right



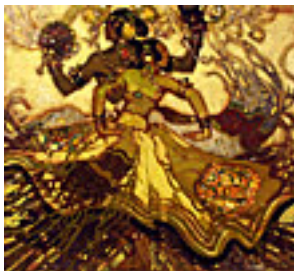
160214

GRAY, COLIN.

Untitled, c. 2005

12 x 9 inches | Mixed media on

Signed on back



154213

GROESBECK, DANIEL SAYRE.

Javanese Dancers, c. 1920

38 x 42.125 inches | Oil on canvas

Signed upper right



159515

HARCOFF, LYLA MARSHALL.

Five Roses,

28 x 20 inches | Oil on canvas

Signed lower right



160188

HARMER, ALEXANDER.

California Mission Scene, c. 1890

8 x 11.5 inches | Mixed media on

Signed lower right



160204

HEEBNER, MARY.

Little Venus: Venus Series,

25 x 24.5 inches | Mixed media on

Signed



160189

HINKLE, CLARENCE.

Cucumbers, 1942

20 x 24 inches | Egg tempera on



160206

KNOWLES, JOSEPH.

Mural Study, c. 1937

18.5 x 50 inches | Oil on masonite

Estate stamped



160202

KOPLIN, PHILIP.

Winter in Connecticut, 2015

11 x 8 inches | Acrylic on yupo

Signed



160203

NOT FOR SALE

KOPLIN, PHILIP.

Cross Section, 2016

8 x 11 inches | Acrylic on yupo

Signed

112123

KOSA JR., EMIL.

Nude with Bobbed Hair , Circa 1925.

24.75 x 18 inches | Charcoal on

Signed lower left.



151163

LEBRUN, RICO.

Study for "The Magdalene", c 1950

30 x 25 inches | Oil on canvas

Unsigned



113220

LUNGREN, FERNAND.

Central Park Promenade, 1888

16 x 20 inches | Gouache on board

Signed LR



159226

NOT FOR SALE

LUTZ, DAN.

Matador, 1957

16 x 20 inches | Oil on canvas

Signed lower left



159229

NOT FOR SALE

LUTZ, DAN.

Shady Pasture, 1961

18 x 14 inches | Oil on canvas

Signed lower right



160187

MARTINEZ, ALFREDO RAMOS.

Los Indios, 1933

22 x 17 inches | Mixed media on

Signed lower right

106687

MESSICK, BEN.

Morning Paper, 1930's.

9.75 x 8.25 inches | Lithograph.

Signed lower right.

106688

MESSICK, BEN.

Joanie, 1930's.

9.75 x 9.75 inches | Lithograph.

Estate signed.

106689

MESSICK, BEN.

Two Laborers, 1940.

8.25 x 8.75 inches | Lithograph.

Estate signed.

106819

MESSICK, BEN.

Rainy Morning, 1939.

15.675 x 8.675 inches | Lithograph.

Estate signed.

106822

MESSICK, BEN.

Evening in the Park,

8.5 x 11.5 inches | Lithograph.

Estate stamped.

106839

MESSICK, BEN.

Circus People, 1939.

12.75 x 8.5 inches | Lithograph.

Estate signed.



154303

PARSHALL, DOUGLASS.

Two Figures, Nov 1, 1932

23 x 14.5 inches | Oil on board

Signed lower left



160036

NOT FOR SALE

PEAKE, CHANNING.

Vertical Farm Implement, c. 1954

48 x 24 inches | Oil on masonite

Signed lower right



160082

NOT FOR SALE

PEAKE, CHANNING.

Design for Mural - Santa Barbara Library, 1959

27.5 x 32.25 inches | Mixed media

Signed lower right



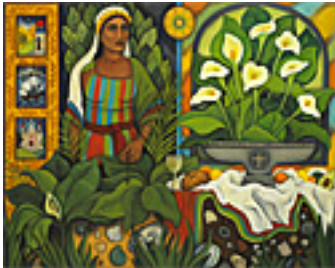
160228

PEREA DE LA CABADA, RAFAEL.

Love is a Rabbit Hole III (triptych), c. 2016

9.5 x 23.25 inches | Mixed media on

Signed



160194

PERKO, ANGELA.

Feast Day (or the Enduring Quality of the Cautionary

48 x 60 inches | Oil on canvas

Signed lower right



113270

PITCHER, HANK.

On The Tarmac: Santa Barbara Airport, Early 1970's

16 x 20 inches | Oil on board.

Unsigned.



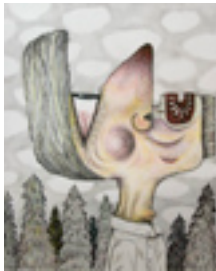
150154

PITCHER, HANK.

Bradburry Bellyboard at Little Drakes, 2001

48 x 32 inches | Oil on canvas over

Signed lower left



160201

PUCCINELLI, KEITH.

Daydreamer, 2014

24 x 19 inches | Mixed media on

Signed lower right

160355

PUCCINELLI, KEITH.

Snakebite, 2014

24 x 18 inches | Mixed media on

Signed lower right



160222

ROBERTSON, RON.

Passage I, 1966

15 x 8.5 x 1 inches | Mixed media

Signed



160223

ROBERTSON, RON.

Wheel of Fortune II, 2003

31 x 18 x 2 inches | Mixed media

Signed



160205

SAVAGE, SUSAN.

First Fruits, 2016

20 x 20 inches | Oil on canvas

Signed lower left



160230

SCHOEFF, MARIE .

Twice Ordinary, 2016

22 x 22 inches | Monotype with

Signed



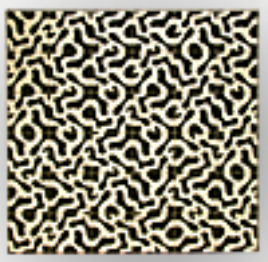
114074

SECUNDA, ARTHUR.

Redwoods II, 1964

19 x 9 inches | Oil on Board

Signed on back



160225

SHELTON, JEFF.

Roads, 2016

48 x 48 inches | Mixed media on

Signed

160226

SHELTON, JEFF.

Roads Sketches, 2016

36 x 24 inches | Mixed media on

Signed



150017

STRASBURG, NICOLE.

Jalama Coast, 2006.

48 x 24 inches | Oil on board.

Signed on back.



154880

NOT FOR SALE

STRONG, RAY.

Toro Canyon Rock, 1977

22 x 28 inches | Oil on canvas

Signed lower right



162018

STRONG, RAY.

Toro Canyon Rock, 1977

22 x 28 inches | Oil on canvas

Signed lower right



162021

STRONG, RAY.

McClure's Ranch, Pierce Point, c. 1960

24 x 48 inches | Oil on board

Signed lower left



152777

SYKES, JOHN.

Early Santa Barbara Farm, 1889

24 x 36 inches | Oil on canvas

Signed lower right



156613

SYKES, JOHN.

Moonrise at Castle Rock, c. 1900

10 x 24 inches | Oil on panel

Signed lower right



158348

SYKES, JOHN.

Castle Rock in Parorama, c. 1900

8.75 x 23.75 inches | Oil on canvas

Signed lower left.



158350

SYKES, JOHN.

By Cooling Streams, c. 1900

9 x 22.5 inches | Oil on canvas over

Signed lower left.



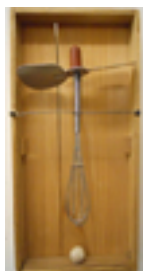
160224

TANNER, JOAN.

The Memorist Delays, 2016

24.25 x 35.5 inches | Mixed media

Signed



159797

UYESAKA, DUG.

late summer thought provoking tool, 2013

14.25 x 6.75 x 3.25 inches | Mixed



160217

UYESAKA, DUG.

Cyanotype Study, 2016

8 x 12 inches | Cyanotype

Signed



160219

UYESAKA, DUG.

Ummm..., 2011

15.125 x 11.375 inches | Collage

Signed



160220

UYESAKA, DUG.

Violent Scents, 2004

13.125 x 11.125 inches | Mixed

Signed



160221

UYESAKA, DUG.

Rushing Towards Infinity... Or Eight, 2009-2012

13.125 x inches | Mixed media

Signed



161526

UYESAKA, DUG.

the power of myth,

4.5 x 7 x 4.5 inches | Mixed media



161626

UYESAKA, DUG.

collage, 2018

9.5 x 7.25 inches | Collage

Signed lower right



160195

VEDDER, SARAH.

Golden Hills, 2016

12 x 16 inches | Oil on linen

Signed on back



112754

VOLLMER, GRACE LIBBY.

Tulips and Watercan, 1942

24 x 20 inches | Oil on board

Signed lower right



114013

WARSHAW, HOWARD.

Animal and Rock - UC San Diego Mural Study, C. 1973.

9.5 x 13 inches | Pen and Ink Wash.



156378

WARSHAW, HOWARD.

Cow / Bull, c. late 1960s

31 x 30 inches | Mixed media on

Unsigned