



156715

ABBOTT, MEREDITH BROOKS.

Spring Canyon, 2012

14 x 18 inches | Oil on canvas

Signed lower right



157591

ABBOTT, MEREDITH BROOKS.

Damp Evening / Rincon, 1997

11 x 14 inches | Oil on board

Signed lower right



157855

BAUER, BEN.

Spring Moonrise in South Dakota, 2012

24 x 29 inches | Oil on canvas over

Signed lower right



157809

DELAPP, TERRY.

Hot Day with Something Red, 2013

36 x 36 inches | Acrylic on canvas

Signed lower right



157808

DELAPP, TERRY.

Lavatera, 2013

24 x 18 inches | Acrylic on canvas

Signed lower right



157807

EBY, BETSY.

Nocturna Sprezzatura, 2013

35 x 45 inches | Encaustic

Signed



157851

FRANCIS, JON.

Lonely Cypress, 2013

16 x 20 inches | Oil on canvas

Signed lower right



157852

FRANCIS, JON.

Highway 1 Rock, 2013

11 x 14 inches | Oil on board

Signed lower left



157997

GOLDYNE, JOSEPH.

Untitled, 2013

36 x 18 inches | Oil on linen over

Signed



157847

KAHN, WOLF.

To Rothko, 1998

18 x 24 inches | Oil on canvas

Signed on back



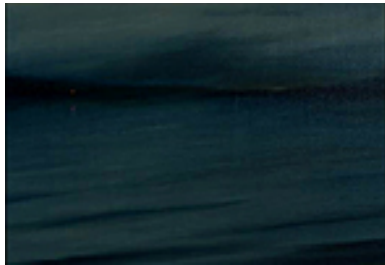
157810

LOZANO, MARK.

Corner of an Old Studio, 2012

10 x 10 inches | Pencil on paper

Signed



157856

PETERS, CHRIS.

At Twilight, 2013

11 x 16 inches | Oil on linen over

Signed



157905

ROSS, LINDSEY.

Still Life, 2013

11 x 13.75 inches | Tintype

Signed



157859

ROSS, LINDSEY.

Mel, 2013

10 x 8 inches | Tintype

Signed



157860

ROSS, LINDSEY.

Figure 1, 2013

8.75 x 6.75 inches | Tintype

Signed



157861

ROSS, LINDSEY.

Figure II, 2013

6.75 x 8.75 inches | Tintype

Signed



157906

ROSS, LINDSEY.

Still Life 2, 2013

5 x 4 inches | Tintype

Signed



153917

RYE, BJORN.

Santa Ynez Valley, c 1996

20 x 26 inches | Pastel on paper

Signed lower right



153916

RYE, BJORN.

Marsh Land, c 1996

16 x 20 inches | Pastel on paper

Signed lower right



157857

SKINNER, DAVID.

Road to Gort, 2013

10 x 10 inches | Acrylic on paper

Signed



157996

SKINNER, DAVID.

Untitled, 2013

10 x 10 inches | Acrylic on paper

Signed



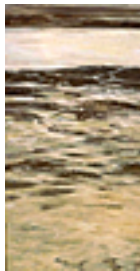
152857

STRASBURG, NICOLE.

Kelp Tide, 2009

48 x 36 inches | Oil on birch panel

Signed on back



157805

STRASBURG, NICOLE.

Tideline 10, 2003

48 x 24 inches | Oil on birch panel

Signed on back



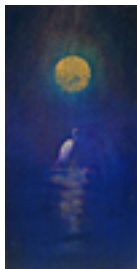
157850

THOMAS, JAMES DAVID.

Floating World III, 2012

13 x 20 inches | Oil on panel

Signed



157849

THOMAS, JAMES DAVID.

February Haiku State III, 2012

12.25 x 6.5 inches | Oil on panel

Signed



157848

THOMAS, JAMES DAVID.

La Luna en el Labrinto State II, 2012

7.25 x 10 inches | Oil on panel

Signed



153188

VEDDER, SARAH.

On the Floodplain (Sisquoc), 2007.

24 x 36 inches | Oil on linen

Signed on back



158276

VEDDER, SARAH.

A Small Marsh, 2013

20 x 30 inches | Oil on linen

Signed lower right



158105

VEDDER, SARAH.

Carpinteria Bluffs to the Islands, 2012

12 x 16 inches | Oil on panel

Signed lower left



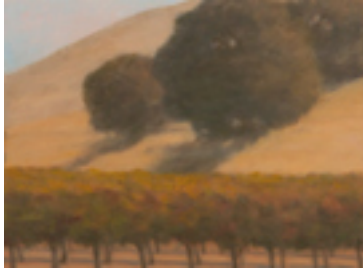
156852

VEDDER, SARAH.

Blue Moon, 2012

12 x 12 inches | Oil on linen

Signed on back



156275

VEDDER, SARAH.

Autumn Vineyards, 2011

9 x 12 inches | Oil on board

Signed on back



156276

VEDDER, SARAH.

Foxen Canyon Field, 2011

9 x 12 inches | Oil on board

Signed on back



157806

WIESBLOTT, MONICA.

The Fable, 2012

4.5 x 8 inches | Photo Polymer

Signed



154101

WIESBLOTT, MONICA.

The Deep Shaking made Me Feel Small, 2010

5 x 5 inches | Photo Polymer Etching

Signed lower right.