

**156507**

ALEXANDER, JOHN WHITE.

At the Window, 1911

40 x 22 inches | Oil on canvas

Signed lower right



**156508**

BRECK, JOHN LESLIE.

Ipswich, c. 1894

14.75 x 27 inches | Oil on canvas

Signed lower right



**150732**

CALIFANO, JOHN EDMUND.

The Love Letter, 1890

29.75 x 17.75 inches | Oil on canvas

Signed lower right



**156549**

CASSATT, MARY.

Mother and Child, c. 1900

19.875 x 15 inches | Mixed media on

Signed lower right



**156502**

COOPER, COLIN CAMPBELL.

Gate of the Maharaja's Palace, Jaipur, 1914

24.125 x 32.125 inches | Oil on

Signed lower right



**106366**

COOPER, COLIN CAMPBELL.

Study for Gate of the Maharaja's Palace, Jaipur, c. 1914

16.5 x 20.5 inches | Oil on canvas

Estate stamped



**156551**

HASSAM, CHILDE.

The Red Mill, Cos Cob, 1896

17.25 x 24.25 inches | Oil on canvas

Signed lower right



**150313**

HASSAM, CHILDE.

Sunrise - Autumn, 1884

12 x 18 inches | Oil on canvas

Signed lower left



**156510**

MORA, FRANCIS LUIS.

Picnic, Wrentham, MA, c. 1900

12 x 25 inches | Oil on board

Signed lower right



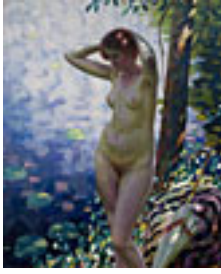
**156511**

PERRY, LILLA CABOT.

Mother and Child, 1912

40 x 30 inches | Oil on canvas

Signed upper left



**156514**

RITMAN, LOUIS.

By the River, c. 1920

50 x 40 inches | Oil on canvas

Signed lower right



**156515**

TWACHTMAN, JOHN HENRY.

Harbor Scene, Dordrecht, Holland, 1880

15.5 x 18 inches | Oil on panel

Signed lower left