



111021

MESSICK, BEN.

Rehearsing the Elephant Act ,
30 x 36 inches | Pastel on paper
Unsigned



112001

CARMEAN, HARRY.

Acrobats: Female in Pastel & Male in Black & White,
30 x 36 inches | Oil on canvas
Signed lower center



113960

SKLAR, DOROTHY.

Harlequins on the Stage, 1951
13.5 x 19.25 inches | Oil on board
Signed upper right



114667

LUTZ, DAN.

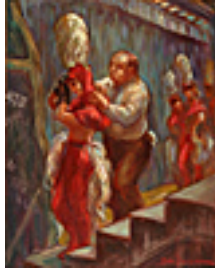
Rehearsal At Eaglerock, 1952
36 x 30 inches | Oil on linen
Signed lower left



127360

PENNEY, FRED D..

Dancers in the Wings, 1943
15.875 x 19.875 inches | Watercolor
Signed lower right



149492

FREEMAN, DON.

Stagehand and Chorus Girl, 1939

20 x 16 inches | Oil on board

Signed lower right



150684

HOCKNEY, DAVID.

Parade with Auditorium, 1980.

22.5 x 29.75 inches | Other.

Signed lower right.



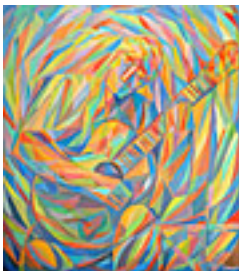
151252

SHINN, EVERETT.

Curtain Call, 1938

16 x 20 inches | Watercolor on

Signed lower right



151810

TAIRA, FRANK.

Guitar Player, 1962

40 x 35 inches | Oil on canvas

Signed lower right



151814

TAIRA, FRANK.

Juggler, 1960

40 x 30 inches | Oil on canvas

Signed lower right



151892

CRISP, ARTHUR.

Jazz Band and Dancers,

17.25 x 29 inches | Gouache on

Signed lower right



151897

LABAUDT, LUCIEN .

Low Jinks, 1933

20 x 11.75 inches | Pastel on paper.

Signed lower right.



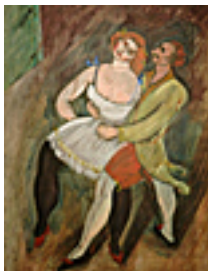
151906

WARSHAW, HOWARD.

Untitled (Set Design Studies), 1946

19 x 25 inches | Mixed media on

Signed lower right



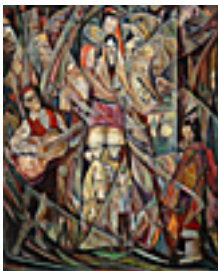
151915

WEBER, MAX.

Two Dancers- Russian Ballet, c.1909.

18 x 24.75 inches | Gouache on

Unsigned.



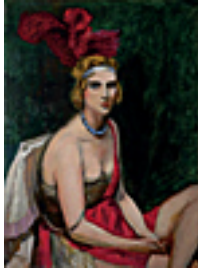
151916

FLECK, JOSEPH.

Fiesta Day at Taos,

30 x 25.125 inches | Oil on canvas.

Signed lower left.



151918

KUHN, WALT.

Show Girl, 1930.

39.5 x 29 inches | Oil on canvas.

Signed lower left.



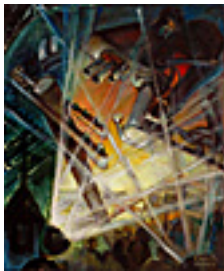
151919

LUTZ, DAN.

Orchestra, 1931.

32 x 66 inches | Oil on canvas.

Signed lower right.



151921

JONES, ELBERTA.

Miracle of Television, c. 1952.

24 x 20 inches | Oil on canvas.

Signed lower right.