



114795

BALFOUR, HELEN.

Spring Day, Circa 1900.

8 x 11 inches | Watercolor on Paper.

Signed lower right.



150124

BAYER, HERBERT.

umsinkender (collapsing), 1933.

13.25 x 22.125 inches | Oil on

Signed lower right.



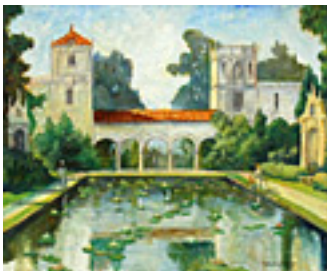
127216

BIERSTADT, ALBERT.

Saint Anthony's Falls, Circa 1887.

30 x 54 inches | Oil on canvas.

Signed lower left.



114381

COOPER, COLIN CAMPBELL.

Lily Pond, Balboa Park, San Diego, Dated 1916.

20 x 24 inches | Oil on canvas.

Signed lower right.



149012

COOPER, COLIN CAMPBELL.

Nocturne at Alhambra, C. 1925.

26 x 20 inches | Oil on canvas.

Signed on back.



106412

COOPER, COLIN CAMPBELL.

Hunter College, New York City, c 1910

40 x 25 inches | Oil on canvas

Signed lower right



105426

DE FOREST, LOCKWOOD.

Spring Sunset in Sun Behind Clouds, ND

9.25 x 13.75 inches | Oil on canvas.

Signed lower right.



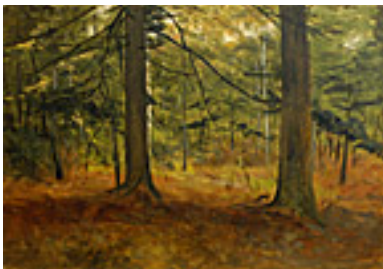
106347

DE FOREST, LOCKWOOD.

Mexico Series: Snow Capped Peaks, Feb 26, 1904

9.5 x 14.25 inches | Oil on artist's

Signed lower left.



105512

DE FOREST, LOCKWOOD.

Interior Forest Scene, March 19 (no year)

9.75 x 14 inches | Oil on board.

Signed lower left.



108259

DE FOREST, LOCKWOOD.

Montecito Fall Sunset,

9.75 x 14 inches | Oil on artist's card

Signed lower right.



150055

DE FOREST, LOCKWOOD.

San Bernardino Range in Early Spring (Palm Springs),

9.75 x 14 inches | Oil on board

Signed lower left



104556

DE FOREST, LOCKWOOD.

View From Hill Near Ojai, California Looking Northeast,

9.75 x 14.125 inches | Oil on board.

Unsigned.



127969

EWING, EDGAR.

Report From Knossos No 18, 1972

14.5 x 12.75 inches | Oil on canvas.

Signed lower left.



120940

HAINES, RICHARD.

The Lamb, c 1953

39 x 20 inches | Oil on board

Signed lower right



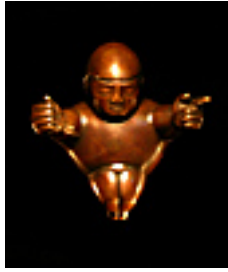
149686

JORGENSEN, CHRISTIAN A..

Oakland Marsh Looking to San Francisco, Circa 1900.

11 x 14.75 inches | Watercolor on

Signed lower right.



149932

LINDER, ALLEN.

Man in Motion,

11 x 10 x 6 inches | Bronze.

Signed.



113556

MACDONALD-WRIGHT, STANTON.

Synchromy, Early 1950s

10.5 x 4.5 inches | Oil on Canvas on

Unsigned



114134

MAYHEW, NELL BROOKER.

On Pilgrim's Path, c. 1905

7.5 x 8 inches | Etched monotype.

Signed.



152666

MAYHEW, NELL BROOKER.

On Pilgrim's Path, c 1905

7.5 x 8 inches | Etched monotype.

Signed.



149122

MORAN, THOMAS.

Land of Dreams, 1920.

16 x 20 inches | Oil on canvas.

Signed lower right.



149916

WARNER, NELL WALKER.

Still Life with Nasturtiums, c. 1925.

24 x 20 inches | Oil on canvas.

Signed lower right.



149165

WEBER, MAX.

Artist Painting, The Artist in His Studio, 1957.

21 x 36 inches | Oil on canvas.

Signed lower right.



150197

WILDE, JOHN.

Skulls of Small Mammals, 1973

9 x 14.875 inches | Oil on board

Signed on back