



**149409**

ALDRIN, ANDERS.

Yellow Bridge with Orange Background,

8.75 x 9.5 inches | Oil on masonite.

Signed lower left.



**127306**

ALTOON, JOHN.

Two Figures and Dove, c. 1957.

35 x 25 inches | Oil on board.

Unsigned.



**127406**

BERNHARDT, JOHN.

Delancey Street III (Orange, Gray, Blue and Black), 1961.

10 x 10.5 inches | Woodblock on

Signed lower right.



**127440**

BERNHARDT, JOHN.

Construction (Orange, Green, Gold, Blue Gray and

11 x 16.25 inches | Woodblock on

Signed lower right.



**127399**

BERNHARDT, JOHN.

Dance of Life - Large (Orange and Pink), 1954-1958.

13.5 x 13.5 inches | Woodblock on

Titled lower left and signed and

**149643**

BERNHARDT, JOHN.

The City (Black and Silver), 1954

13 x 15 inches | Woodblock on

Signed lower right.



**127407**

BERNHARDT, JOHN.

Skyway - Proof, 1953.

13 x 15.25 inches | Color woodblock

Signed lower right.

**127465**

BERNHARDT, JOHN.

The Man of God, 1951.

13 x 16.5 inches | Woodblock on

Signed lower right.

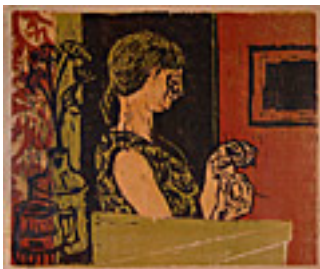
**127446**

BERNHARDT, JOHN.

The Demagogue, 1950.

13 x 18 inches | Woodblock on

Signed lower right.



**127448**

BERNHARDT, JOHN.

Girl Knitting, 1952.

14 x 17 inches | Woodblock on

Signed upper right.

**149646**

BERNHARDT, JOHN.

Two Trees, 1953

15 x 16 inches | Woodblock on

Signed lower right.

**127468**

BERNHARDT, JOHN.

Still Life [2], 1953.

19 x 16 inches | Woodblock on

Signed lower right.



**127913**

BERNHARDT, JOHN.

Sea Gull (Green, Violet, and Purple), 1953.

20.5 x 18 inches | Woodblock on

Signed lower right.



**127513**

BERNHARDT, JOHN.

Power Plant, 1954

16.5 x 24 inches | Woodblock on

Signed lower right.

**149590**

BERNHARDT, JOHN.

Electric Plant (Red), 1954.

19 x 23 inches | Woodblock on

Signed lower right.



**149634**

BERNHARDT, JOHN.

Pipe Tools (Orange and Black), 1955-59.

26.5 x 19.5 inches | Woodblock on

Signed lower right.



**149648**

BERNHARDT, JOHN.

Radio Still Life (Orange, Blue and Violet), 1956

22 x 26 inches | Woodblock on

Signed lower right.

**149587**

BERNHARDT, JOHN.

Queensbridge (Red and Green), 1955-1959.

20 x 30 inches | Woodblock on

Signed lower right.



**149637**

BERNHARDT, JOHN.

Queensbridge (Orange), 1955.

20 x 30 inches | Woodblock on

Signed lower right.

**149654**

BERNHARDT, JOHN.

Harbor Storage Tanks (Red and Green), 1955-59.

20 x 30 inches | Woodblock on

Signed lower right.



**149593**

BERNHARDT, JOHN.

After an Iran Sculpture, 1956-58.

23 x 31 inches | Woodblock on

Signed lower right.



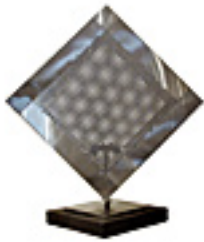
**127564**

BERNHARDT, JOHN.

The Matriarch, 1956

28 x 28 inches | Polymer tempera on

Signed upper left



**114039**

BORTOLAZZO, KEN.

Diamond Panels - Small, 2003.

11 x 10 x 6 inches | Stainless steel

Other



**114040**

BORTOLAZZO, KEN.

Diamond Panels - Large, 2003.

17 x 15 x 7 inches | Stainless steel.

Other.



**149541**

BROWNE, BYRON.

Eventide, 1950.

48 x 36 inches | Oil on canvas.

Signed lower right.



**114772**

CARMEAN, HARRY.

Two Male Nudes, 1957.

26 x 20 inches | Oil on canvas.

Signed on back.



**150052**

DE FOREST, LOCKWOOD.

Palm Springs, November 25, 1905

9.75 x 14 inches | Oil on artist's card

Signed lower left.



**150053**

DE FOREST, LOCKWOOD.

Mt San Jacinto from a Distance (Palm Springs), May 12,

9.75 x 14 inches | Oil on artist's card

Signed lower left.



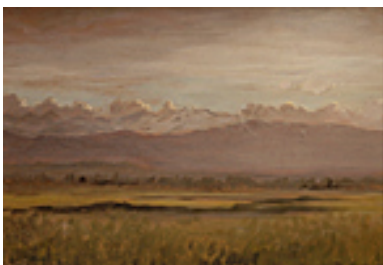
**150054**

DE FOREST, LOCKWOOD.

Palm Springs with San Bernardino Range in Distance, 1905,

9.75 x 14 inches | Oil on artist's card

Signed lower left.



**150055**

DE FOREST, LOCKWOOD.

San Bernardino Range in Early Spring (Palm Springs),

9.75 x 14 inches | Oil on board

Signed lower left



**128008**

DEMETRIOS, ARISTIDES BURTON.

Double Acrobat, Circa 2002.

37 x 12 x 12 inches | Bronze

Other



**149547**

DOLE, WILLIAM.

Interior with Landscape, 1958.

12.5 x 18 inches | Other.

Signed lower left.



**127944**

EWING, EDGAR.

Desert Land Near Jerome (Arizona), 1959

6 x 11.5 inches | Oil and ink on

Signed lower left



**127942**

EWING, EDGAR.

Near Jerome (Arizona), 1959.

6.5 x 13.5 inches | Acrylic on paper.

Signed lower left.



**127960**

EWING, EDGAR.

Akhup in Habitat, 1962.

28 x 30 inches | Oil on canvas.

Signed lower right.



**127807**

FISHER, ANYA.

Landscape in Greens and Browns, 1958.

20 x 36 inches | Oil on canvas.

Signed lower right.



**107136**

FISHER, ANYA.

Woman Holding Bouquet,

36 x 24 inches | Oil on canvas.

Signed lower right.



**107143**

FISHER, ANYA.

Horizontal Still Life, c 1970

30 x 40 inches | Oil on canvas

Signed lower left



**107799**

FISHER, ANYA.

Winding Blue River with Brown Landscape, Circa 1970

36 x 48 inches | Oil on canvas

Signed: LR



**127659**

HAINES, RICHARD.

Three Children Outside the Pueblo, c 1960s

4.5 x 4.25 inches | Gouache on

Unsigned.





**127635**

HAINES, RICHARD.

Three Figures on Green Background, c late 1950s

4.875 x 4.875 inches | Gouache on

Estate signed.



**127653**

HAINES, RICHARD.

Five Women and a Child,

4.5 x 6 inches | Gouache on paper.

Unsigned.



**127660**

HAINES, RICHARD.

Night Swimmer,

5.5 x 5.875 inches | Gouache on

Unsigned.



**120940**

HAINES, RICHARD.

The Lamb, c 1953

39 x 20 inches | Oil on board

Signed lower right



**127020**

HAINES, RICHARD.

Pueblo, 1972.

32 x 30 inches | Oil on canvas

Signed lower right



**149673**

KORNFELD, HERB.

At the Forge, 1941

18 x 24 inches | Oil on canvas

Signed upper left



**114925**

LACOM, WAYNE.

Bottles with Fruit, Circa 1950s

18 x 24 inches | Oil on board

Signed lower right



**114926**

LACOM, WAYNE.

Avocados and Bottle, c 1949

18 x 24 inches | Oil on board

Signed lower left



**114816**

LANE, BETTY.

That Rock - Small,

10 x 12 inches | Oil on masonite

Other



**149766**

LAZAREVICH, EMIL.

Abstract Figure #6, 1996.

18 x 24 inches | Pastel on paper.

Signed lower right.



**112042**

LUTZ, DAN.

Church at Etna, Mexico, 1954

24 x 30 inches | Oil on canvas

Signed left center



**114669**

LUTZ, DAN.

Seminary, 1968

24 x 30 inches | Oil on linen

Signed lower left



**149710**

REFREGIER, ANTON.

Two Fishermen, 1954.

48 x 13.5 inches | Oil on masonite.

Signed upper right.



**149305**

REMAHL, FREDERICK.

Two Trees , Circa 1950's

9 x 13 inches | Watercolor on paper

Signed lower left



**149311**

REMAHL, FREDERICK.

Animal, Tree, Rock, Circa 1950's.

9.75 x 12.25 inches | Watercolor on

Signed lower right.



**149310**

REMAHL, FREDERICK.

Orange Sun, c. 1950s.

9.5 x 13.5 inches | Watercolor on

Signed lower right.



**149314**

REMAHL, FREDERICK.

Four Orange Leaves, Circa 1950s.

9.5 x 13.5 inches | Watercolor on

Signed lower left.



**149216**

REMAHL, FREDERICK.

Abstraction No 2 (Candle), 1940

18 x 12 inches | Oil on canvas.

Signed lower right.



**149246**

**NOT FOR SALE**

REMAHL, FREDERICK.

Tree In Orange Scape, 1935

18 x 12 inches | Oil on canvas

Signed lower right



**149343**

REMAHL, FREDERICK.

Land of the Unknown, 1948

12.25 x 18.25 inches | Watercolor on

Signed lower right



**149703**

REMAHL, FREDERICK.

Lone House, Lone Tree,

8 x 29.25 inches | Oil on artist's

Signed lower right.



**149339**

REMAHL, FREDERICK.

Evergreens Blushing, 1948

12.5 x 19 inches | Watercolor on

Signed lower right



**149284**

REMAHL, FREDERICK.

Orange Abstraction, 1930.

14 x 18 inches | Oil on canvas.

Signed lower left.



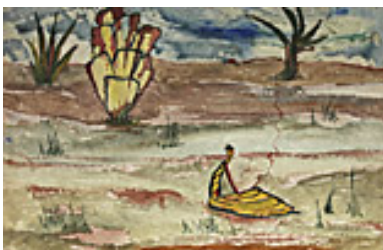
**149247**

REMAHL, FREDERICK.

Six Dolls in Tree Kingdom, Circa 1925.

12 x 24 inches | Oil on canvas.

Signed lower left.



**149336**

REMAHL, FREDERICK.

Doll Smoking, 1951

14.75 x 22 inches | Watercolor on

Signed lower right.



**149292**

REMAHL, FREDERICK.

Desert Sky at Night, 1942

9.3 x 36 inches | Oil on board

Signed lower right



**149700**

REMAHL, FREDERICK.

Yellow Sky, Orange/Blue Moon, 1940.

19 x 22 inches | Oil on canvas.

Signed lower left.



**149303**

REMAHL, FREDERICK.

Modernist Scape - FR65, nd.

19 x 23 inches | Charcoal on paper.

Signed lower left.



**114074**

SECUNDA, ARTHUR.

Redwoods II, 1964

19 x 9 inches | Oil on Board

Signed on back



**150057**

SHULMAN, JULIUS.

Case Study House #22, Recent Print

20 x 16 inches | Silver Gelatin Print

Signed on back



**150023**

VENARD, CLAUDE .

Table Still Life, May 1956.

39.5 x 39.5 inches | Oil on canvas.

Signed lower right.



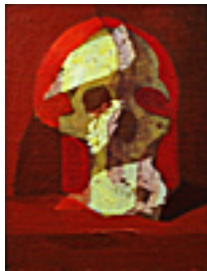
**150026**

VENARD, CLAUDE .

Plate of Oysters, 1953.

39.5 x 39.5 inches | Oil on canvas.

Signed lower left.



**120898**

WARSHAW, HOWARD.

Skull Study with Silver Foil, C. 1963.

13 x 10 inches | Acrylic, Silver Foil,

Unsigned.



**120872**

WARSHAW, HOWARD.

Fossil Landscape, C 1967

16 x 34 inches | Oil on Canvas

Unsigned