



**127719**

BERMAN, EUGENE.

Paysage Ecroule au Crepuscule , 1934.

19.25 x 28.25 inches | Oil on Canvas.

Signed.



**127216**

BIERSTADT, ALBERT.

Saint Anthony's Falls, Circa 1887.

30 x 54 inches | Oil on canvas.

Signed lower left.



**114875**

BOTKE, JESSIE ARMS.

Tropical Foliage - Three Panels, c. 1940

42.5 x 9 inches | Oil on canvas over

Signed lower right



**149541**

BROWNE, BYRON.

Eventide, 1950.

48 x 36 inches | Oil on canvas.

Signed lower right.



**110836**

COOPER, COLIN CAMPBELL.

Moonset: Avila, Spain ,

5 x 7 inches | Oil on board.

Estate stamped.



**127882**

COOPER, COLIN CAMPBELL.

Village in the Countryside, Circa 1920.

9.25 x 13.75 inches | Oil on canvas

Signed lower right.



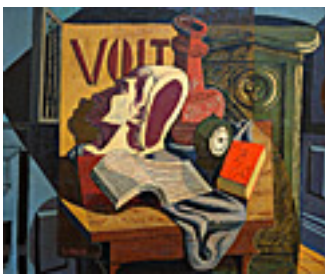
**160616**

COOPER, COLIN CAMPBELL.

The Train Round House, Salem, Massachusetts, c 1910

20 x 25.5 inches | Gouache on

Signed lower left.



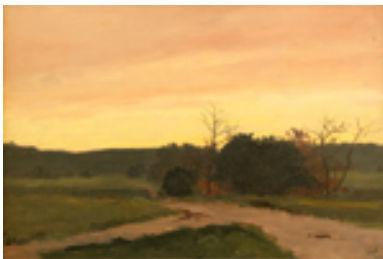
**149640**

CRISS, FRANCIS.

Still Life, 1930

20.2 x 22.2 inches | Oil on canvas

Signed lower left



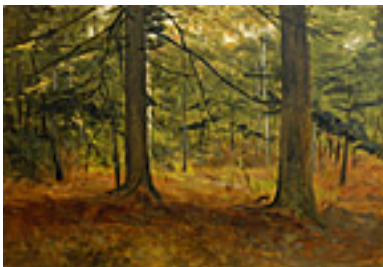
**103408**

DE FOREST, LOCKWOOD.

Long Island Paths Near Oyster Bay at Sunset, February

9.75 x 14 inches | Oil on board.

Signed lower left.



**105512**

DE FOREST, LOCKWOOD.

Interior Forest Scene, March 19 (no year)

9.75 x 14 inches | Oil on board.

Signed lower left.



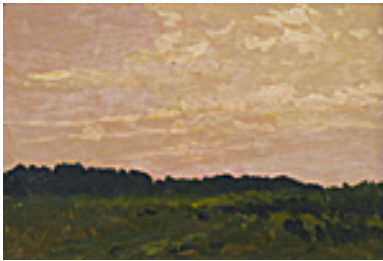
**105524**

DE FOREST, LOCKWOOD.

New Moon Over Path and Tree, Sep., 1912

9.75 x 14 inches | Oil on board.

Signed lower left.



**108472**

DE FOREST, LOCKWOOD.

Santa Barbara: Pale Pink Sky over Treeline, April 14, 1901.

9.75 x 14 inches | Oil on board.

Signed lower right.



**149800**

JORGENSEN, CHRISTIAN A..

Yosemite Valley, 1916.

24 x 36 inches | Oil on canvas.

Signed lower left.



**149873**

KOERNER, W.H.D..

Dreams on a Summer Day (The Black Dog), 1921.

28 x 36 inches | Oil on canvas.

Signed lower right.



**113220**

LUNGREN, FERNAND.

Central Park Promenade, 1888

16 x 20 inches | Gouache on paper

Signed LR



**114717**

MAYHEW, NELL BROOKER.

Evening Eucalyptus I, Circa 1914

19.75 x 7.75 inches | Etched

Signed



**108006**

MAYHEW, NELL BROOKER.

Apple Blossom Time in New England, 1920s.

11 x 18 inches | Etched monotype.

Signed.



**149847**

MAYHEW, NELL BROOKER.

The Corn Belt, or the Corn Field, or the Grain Belt, 1920's.

12 x 18 inches | Etched monotype.

Signed and titled along the lower



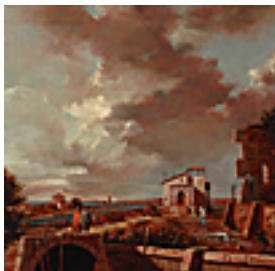
**149064**

MERRILD, KNUD.

Abstraction 444, c 1935

10.5 x 7.5 inches | Mixed media on

Signed lower right



**149883**

NAVA, JOHN.

Capriccio with Haitians, 1994

15.5 x 16 inches | Oil on canvas over

Signed on back

**NOT FOR SALE**



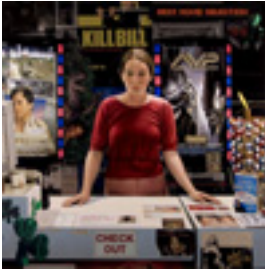
**149805**

NAVA, JOHN.

Reclining Nude, 1997.

16.75 x 24 inches | Oil on canvas

Signed on back.



**149432**

NAVA, JOHN.

Check Out, 2005

63 x 63 inches | Oil on canvas over

Signed on back



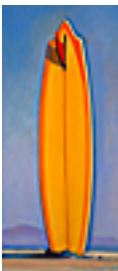
**149891**

PITCHER, HANK.

Mr Zoggs Surfboard, 2005.

14 x 6 inches | Oil on board.

Signed lower right.



**149892**

PITCHER, HANK.

Mr Zogg's Surfboard and Rincon Peak, 2005.

14 x 6 inches | Oil on board.

Signed lower right.



**149893**

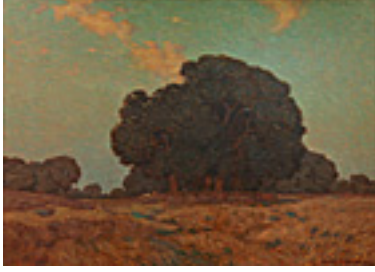
PITCHER, HANK.

Wayne Rich Coke Bottle Green Surfboard, 2005.

14 x 6 inches | Oil on board.

Signed lower right.





**148971**

REDMOND, GRANVILLE.

Menlo Park, 1911.

24 x 30 inches | Oil on canvas.

Signed lower right.



**114219**

SMITH, JACK R..

Portrait of Diane Bushburg, 2003.

6 x 6 inches | Oil on copper.

Signed lower right.



**127693**

SMITH, JACK R..

Portrait of Neil Libbert, 2003.

6 x 6 inches | Oil on copper.

Signed lower right.

**149876**

SMITH, JACK R..

Portrait of Bob Watkins, 2003.

6 x 6 inches | Oil on copper.

Signed lower right.



**127148**

SYMONS, GARDNER.

Mission San Juan Capistrano, c 1895

14 x 22 inches | Oil on canvas

Signed lower right