



127240

BELL, CECIL CROSLEY.

The Amusement Park, C. 1957.

22 x 28 inches | Oil on canvas over

Signed LR.

127327

COOKE, DAVID P..

The Slip, 2004.

7 x 24 inches | Oil on panel.

Signed on back.



127359

COOKE, DAVID P..

The Players, 2004.

7 x 24 inches | Oil on panel.

Signed on back.



114778

FRANCIS, JON.

Bodega Bay North, 2003.

11 x 14 inches | Oil on wood panel.

Signed lower left.



127196

FRANCIS, JON.

Time for a Cool One, 2004.

20 x 24 inches | Oil on canvas.

Signed lower left.



159940

FREEMAN, DON.

Portrait of Lydia,

28.25 x 19.25 inches | Oil on canvas

Estate stamped



104903

FREEMAN, DON.

Man Resting in Central Park , 1930's

13.25 x 14.5 inches | Gouache on



113334

NOT FOR SALE

FREEMAN, DON.

The Artist's House,

19.5 x 23.25 inches | Oil on canvas

Signed lower right



127311

HAINES, RICHARD.

Rincon Annex US Post Office Study, Panel 26, c. 1938.

7.25 x 16.5 inches | Other.

From the estate.



127312

HAINES, RICHARD.

Rincon Annex US Post Office Study, Panel 25, Circa 1938.

7.25 x 16.5 inches | Other.

Other.



127313

HAINES, RICHARD.

Building the Railroads UP - Triptych, Circa 1938.

7.375 x 28.5 inches | Other.

Other.



127020

HAINES, RICHARD.

Pueblo, 1972.

32 x 30 inches | Oil on canvas

Signed lower right



114808

HUSTON, STEVE.

Retired, 2003.

24 x 16 inches | Oil on panel.

Signed lower right.



127217

KOSA JR., EMIL.

Near Malibu, 1950's.

24 x 35.75 inches | Oil on board.

Signed left center.



114790

LACOM, WAYNE.

Jerome, Arizona , 1951

24 x 36 inches | Oil on board

Signed lower right



114828

LACOM, WAYNE.

Deserted Farm, Circa 1950s.

24 x 36 inches | Oil on board.

Signed lower right.



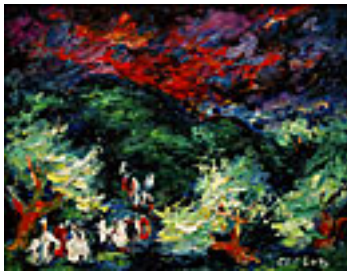
114713

LUTZ, DAN.

Watertower with Trees, Circa 1938

14.5 x 2 inches | Watercolor on

Signed lower right



114835

LUTZ, DAN.

Baptism by the River, Circa 1935

14 x 18 inches | Oil on canvas

Signed lower right



127236

LUTZ, DAN.

First Street Filling Station, Circa 1937.

30 x 24 inches | Oil on canvas.

Signed lower right.



127488

MESSICK, BEN.

On the Soapbox, Circa 1930

20 x 24 inches | Charcoal on paper

Signed lower right



154772

MESSICK, BEN.

Olvera Street Scene, Circa 1930

30 x 24 inches | Charcoal on Paper.

Signed upper right.



127239

MESSICK, BEN.

Olvera Street Scene, Circa 1930.

30 x 24 inches | Charcoal on Paper

Signed upper right



159447

MESSICK, BEN.

San Clemente Beach OR Fun in the Sun, Circa 1948.

19 x 27 inches | Oil on canvas.

Signed lower right.



106546

MESSICK, BEN.

San Clemente Beach OR Fun in the Sun, Circa 1948.

19 x 27 inches | Oil on canvas.

Signed lower right.



127298

NELSON, R. KENTON.

One Way, N.D. (Circa 2004)

24 x inches | Oil on panel.

Signed lower left.



151710

PARSHALL, DOUGLASS.

Bicycle Race, 1949

20 x 30 inches | Oil on board

Signed lower left



127520

PERKO, ANGELA.

Emerson Avenue, 2004.

40 x 30 inches | Oil on Canvas.

Signed Lower Right.



127299

PITCHER, HANK.

1968 John Deere #4020, 2004.

15.875 x 37.5 inches | Oil on canvas

Signed and dated.



127338

PITCHER, HANK.

1968 John Deere #4020 at Sedgwick, 2004.

15.875 x 37.5 inches | Oil on canvas

Signed lower right.



120946

SHEETS, MILLARD.

Guaymas, Mexico, 1934.

22 x 30 inches | Watercolor on

Signed lower left.



127231

SKLAR, DOROTHY.

Red Building at 1st & Boyle, 1944.

14 x 20 inches | Watercolor on

Signed lower left.



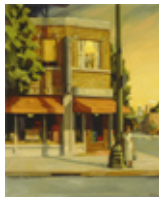
127232

SKLAR, DOROTHY.

The Tunnel, 1947.

17 x 22.75 inches | Watercolor on

Signed lower right.



127328

STORCH, SALLY.

Scene Painter at Dusk, 2004.

30 x 24 inches | Oil on canvas.

Signed lower right.



127339

STRASBURG, NICOLE.

Overpass Series Image#6, 2000.

2 x 2 inches | Aquatint on paper.

LR 2/10.



127340

STRASBURG, NICOLE.

Overpass Series Image#5, 2000.

2 x 2 inches | Aquatint on paper.

LR 1/10.



127341

STRASBURG, NICOLE.

Overpass Series Image#1, 2000.

2 x 2 inches | Aquatint on paper.

LR 1/10.



103802

STRONG, RAY.

Shanties and Shacks - North Coast, 1951

21.5 x 27.5 inches | Oil on canvas.

Signed lower left.



127329

TURNER, RAY.

Midwest Train , 2004

20 x 24 inches | Oil on canvas.

Signed lower right.



127149

WARD, SHIBA.

Farmer's Market, 3rd & Fairfax 1/5, 2004.

6.75 x 9 inches | Acrylic on Artist's

Signed on back.



127150

WARD, SHIBA.

Union Station, No 7 of 7, 2004.

6 x 8 inches | Acrylic on panel.

Signed on back.



127151

WARD, SHIBA.

Union Station, No 2 of 7, 2004.

6 x 8 inches | Acrylic on panel.

Signed on back.



127246

WARD, SHIBA.

Farmer's Market, 3rd & Fairfax 2/5, 2004.

6.75 x 6.75 inches | Acrylic on board.

Signed on back.

127247

WARD, SHIBA.

Farmer's Market, 3rd & Fairfax 3/5, 2004.

6 x 7.5 inches | Acrylic on board.

Signed on back.

127249

WARD, SHIBA.

Farmer's Market, 3rd & Fairfax 5/5, 2004.

6 x 8 inches | Acrylic on board.

Unsigned.



127251

WARD, SHIBA.

Union Station, No 4 of 7, 2004.

6 x 8 inches | Acrylic on panel.

Signed on back.



127252

WARD, SHIBA.

Union Station, No 5 of 7, 2004.

6 x 8 inches | Acrylic on panel.

Signed on back.



127152

WARD, SHIBA.

Union Station, No 1 of 7, 2004.

6 x 8 inches | Acrylic on panel.

Signed on back.



127358

WARD, SHIBA.

Day Job, 2004.

10.5 x 7.5 inches | Acrylic on panel.

Unsigned.



127253

WARD, SHIBA.

Union Station, No 6 of 7, 2004

6 x 8 inches | Acrylic on panel

Signed on back



127248

WARD, SHIBA.

Farmer's Market, 3rd & Fairfax 4/5, 2004.

9.5 x 6.5 inches | Acrylic on board

Unsigned



114792

ZORNES, MILFORD.

Mojave Cottonwoods, 1960

8.5 x 25.5 inches | Oil on canvas

Signed lower left