



120895

WARSHAW, HOWARD.

Seashell, N.D.

9 x 4 inches | Ink on Paper.

Unsigned.



120905

WARSHAW, HOWARD.

Horse Study, N.D.

7.825 x 8 inches | Pencil on Gessoed

Unsigned.



114409

WARSHAW, HOWARD.

Composition of Hands, 1968.

8 x 7.5 inches | Ink and ink wash on

Signed lower right.



120894

WARSHAW, HOWARD.

Horse Study, Looking Back, 1961.

9.5 x 6.5 inches | Wash and

Signed lower right.



120903

WARSHAW, HOWARD.

Figure Study, N.D.

7.25 x 6.5 inches | Pen and Ink Wash

Unsigned.



114363

WARSHAW, HOWARD.

Figure Study on a Stool, 1966

7 x 7.75 inches | Ink, ink wash,
Single initial and date lower right.



114356

WARSHAW, HOWARD.

Hands in Rust Orange,

10.5 x 8.75 inches | Graphite and
Unsigned.



120883

WARSHAW, HOWARD.

Reclining Female Nude, C 1968

12 x 14 inches | Ink wash on paper
Unsigned



120910

WARSHAW, HOWARD.

After Metropolitan Museum Sculptures, 1970.

13 x 9.5 inches | Ink and Wash on
Signed lower right.



120880

WARSHAW, HOWARD.

Two Rhinoceros, C. 1970.

10 x 20 inches | Charcoal, Ink, and
Signed lower right.



120881

WARSHAW, HOWARD.

Lemurs and Monkey Study, 1972.

11 x 14 inches | Charcoal, Ink, and
Signed lower right.



120909

WARSHAW, HOWARD.

Two Figures, 1970.

13 x 8 inches | Ink and Wash on
Signed lower right.



114208

WARSHAW, HOWARD.

"Falling Angel", C. 1970.

7.5 x 7.5 inches | Original ink and oil
Signed lower right.



120902

WARSHAW, HOWARD.

Hand, ND

10.5 x 8 inches | Sepia Ink on Paper
Unsigned



120908

WARSHAW, HOWARD.

Classroom Study, ND

12.375 x 19.825 inches | Pen, Ink,
Unsigned.



120882

WARSHAW, HOWARD.

Standing Female Nude, C. 1968.

24 x 12 inches | Charcoal on Brown

Signed LL.



120884

WARSHAW, HOWARD.

Swimmer, 1961.

4 x 19 inches | Acrylic, ink wash on

Signed and Dated LR.



120913

WARSHAW, HOWARD.

Nebraska Study, Bull, 1958.

14 x 17 inches | Charcoal and Wash

Signed and Dated LL.



120875

WARSHAW, HOWARD.

Six Figures in Series Study, C 1972

8 x 5 inches | Mixed media on

Unsigned.



120898

WARSHAW, HOWARD.

Skull Study with Silver Foil, C. 1963.

13 x 10 inches | Acrylic, Silver Foil,

Unsigned.

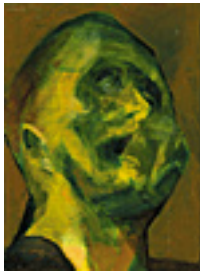


127373

WARSHAW, HOWARD.

Study from Tintoretto, 1969.

18 x 21 inches | Watercolor and
Signed and dated lower left.



120900

WARSHAW, HOWARD.

Ulysses (Homer), Study, C. 1974.

13 x 10 inches | Acrylic on Board.
Signed upper left.



120885

WARSHAW, HOWARD.

Mountain Landscape, C. 1962.

9 x 26 inches | Acrylic on Canvas
Unsigned



120912

WARSHAW, HOWARD.

Two Hands Study, C 1950

10.5 x 12 inches | Acrylic and Pencil
Unsigned



120878

WARSHAW, HOWARD.

Rhinoceros, C. 1965.

20 x 24 inches | Charcoal, Ink, and
Unsigned.



120879

WARSHAW, HOWARD.

Variations on a Theme, C 1970

17.5 x 26 inches | Charcoal, Ink, and

Signed and Dated LR.

120891

WARSHAW, HOWARD.

Multiple Hands Study Secondary Study on Reverse, 1950.

9 x 12 inches | Ink and Wash on

Signed.



120896

WARSHAW, HOWARD.

Horse Study with Silver Foil, c. 1971

7.5 x 15.5 inches | Acrylic, Silver Foil,

Unsigned



120911

WARSHAW, HOWARD.

Two Lambs, C. 1965.

7.5 x 15 inches | Acrylic on Board.

Unsigned.

114007

WARSHAW, HOWARD.

Bowdoin College Mural Study - Deposition & The Daily

12.5 x 18 inches | Collage - Mixed

Signed LR.

152198

WARSHAW, HOWARD.

Bowdoin College Mural Study - Deposition & The Daily

12.5 x 18 inches | Collage - Mixed

Signed lower right.



114695

WARSHAW, HOWARD.

Ulysses (Homer), No 2, 1963

26 x 18 inches | Oil on canvas

Signed lower left



120901

WARSHAW, HOWARD.

Anatomical Study - Circulatory System, C. 1974.

23 x 7 inches | Acrylic on Board.

Signed lower left.



120872

WARSHAW, HOWARD.

Fossil Landscape, C 1967

16 x 34 inches | Oil on Canvas

Unsigned



120886

WARSHAW, HOWARD.

Female Figure in Chair - With Abstract composition on

18 x 16 inches | Acrylic and Pen on

Unsigned.



120889

WARSHAW, HOWARD.

Packing Plant, 1958.

12 x 24 inches | Oil and collage on
Signed lower right.

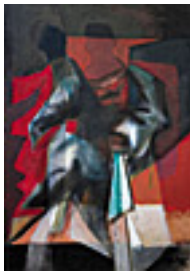


120876

WARSHAW, HOWARD.

Figure - Standing Male, C. 1965.

72 x 26 inches | Acrylic, Ink, Collage
Unsigned



120873

WARSHAW, HOWARD.

Figure Study, Bowdoin Mural, 1971

35 x 24 inches | Acrylic on canvas
Signed lower right



114751

WARSHAW, HOWARD.

Study of an Italian Master, 1959

50 x 24.5 inches | Oil on board
Signed lower left



120877

WARSHAW, HOWARD.

Animal Farm, 1965.

35 x 47 inches | Oil on board.
Signed and Dated LL.



120890

WARSHAW, HOWARD.

Figure and Hydrant, 1948-50

14 x 60 inches | Oil on Board

Signed and Dated LR "For Helen"



114696

WARSHAW, HOWARD.

Bull, 1957

32.75 x 33 inches | Oil on board.

Signed lower left.