



114553

BORTOLAZZO, KEN.

Tall Wing, 2003.

14 x 4 x 2.5 inches | Stainless steel.



114044

BORTOLAZZO, KEN.

Torch, 2003.

10 x inches | Stainless steel.

Artist's Proof.



114554

BORTOLAZZO, KEN.

Double Wing Out, 2003.

9 x 5 x 2 inches | Stainless steel.



114041

BORTOLAZZO, KEN.

Rectangular Panels, 2003.

13 x 6 x 4 inches | Stainless steel with

Artist's proof of an edition of 5.



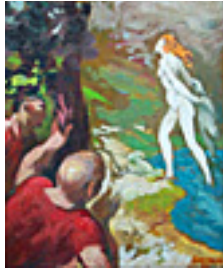
113465

CARMEAN, HARRY.

Lovers on Pink Blanket, 2000.

7.75 x 10.5 inches | Oil on board.

Signed lower right.



113463

CARMEAN, HARRY.

Susannah and the Elders, 1995.

12 x 10 inches | Oil on board.

Signed lower right.



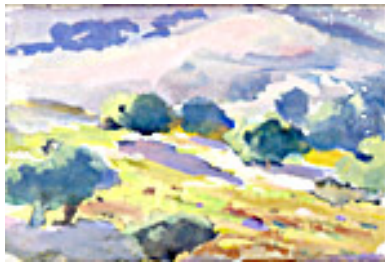
113251

COOPER, COLIN CAMPBELL.

Pastel Cloud and Sun Spot, Circa 1920.

4.5 x 7 inches | Other.

Signed lower right.

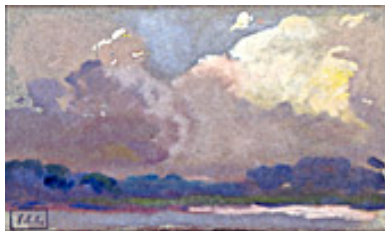


113274

COOPER, COLIN CAMPBELL.

California Oaks on Hillside,

4.5 x 6.25 inches | Gouache on



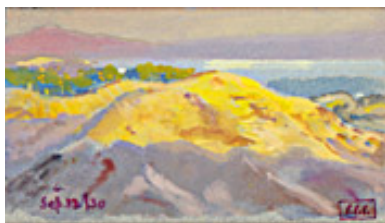
113280

COOPER, COLIN CAMPBELL.

Cloudy Sky Over Coastline,

4.5 x 7 inches | Gouache on paper.

Estate stamped.



113252

NOT FOR SALE

COOPER, COLIN CAMPBELL.

View To Rincon Peak, September 12, 1930

4.5 x 7 inches | Other

Estate stamped



114237

DRURY, MICHAEL.

Wind Timber at Santa Barbara Point, 2003.

12 x 16 inches | Oil on panel.

Signed lower right.

114183

DRURY, MICHAEL.

Cottonwood at Tahoe,

16 x 11 inches | Oil on canvas.

Signed lower right.



113562

FEITELSON, LORSER.

Nude Study, 1925

12.5 x 7 inches | Pencil on paper

Signed and dated LR



114398

FRANCIS, JON.

Later On, 2003.

9 x 12 inches | Oil on board.

Signed lower right.



114399

FRANCIS, JON.

The Shows Starting, 2003.

9 x 12 inches | Oil on board.

Signed lower right.



114400

FRANCIS, JON.

Late Tuesday, 2003.

9 x 12 inches | Oil on board.

Signed lower right.



114407

FRANCIS, JON.

Goin' Home, 2003.

11 x 14.25 inches | Oil on canvas.

Signed lower right.



114537

GOWLAND, FRED.

Lady in Black,

13 x 10.25 inches | Oil and gilt on

Signed lower right.



114538

GOWLAND, FRED.

Will There Be Anything Else?,

15.5 x 11.5 inches | Oil on board.

Signed lower right.



114564

HOLLINGSWORTH, STAN.

Two Pears, 2003.

7 x 8.5 inches | Pastel on sanded

Signed lower right.



114565

HOLLINGSWORTH, STAN.
An Orange in Tissue, 2003
5.75 x 7.5 inches | Pastel
Signed lower right



114566

HOLLINGSWORTH, STAN.
Strawberries on Pewter, 2003.
6.5 x 9.5 inches | Pastel.
Signed lower right.



114568

HOLLINGSWORTH, STAN.
Three Oranges and Tissue, 2003.
7.5 x 5.75 inches | Pastel.
Signed lower right.



114569

HOLLINGSWORTH, STAN.
Peaches, 2003.
4.5 x 8.25 inches | Pastel.
Signed lower right.



114570

HOLLINGSWORTH, STAN.
Strawberries Bowl, 2003.
6 x 8 inches | Pastel.
Signed lower right.



114572

HOLLINGSWORTH, STAN.

One Orange on Tissue, 2002

4.5 x 7.5 inches | Pastel.

Signed lower right.

112049

HOLLINGSWORTH, STAN.

Still Life with Three Oranges and Pitcher, 2002.

12.5 x 17.5 inches | Pastel.

Signed lower right.



114571

HOLLINGSWORTH, STAN.

Seven Oranges, Tissue, and Velvet, 2002

9.5 x 16 inches | Pastel

Signed lower right



114567

HOLLINGSWORTH, STAN.

Pears in Crystal, 2003.

14 x 16 inches | Pastel.

Signed lower right.



111969

LUTZ, DAN.

Fall Fashion, 1951

9 x 12 inches | Oil on board.

Signed lower left.



105745

MARIUSA, .

Flowers in Vase, 1999.

12 x 9 inches | Oil on canvas.

Signed lower right.



113768

MARIUSA, .

Geometric Still Life, Circa 2001.

12 x 9.5 inches | Oil on canvas.

Signed lower left.



114134

MAYHEW, NELL BROOKER.

On Pilgrim's Path, c. 1905

7.5 x 8 inches | Etched monotype.

Signed.



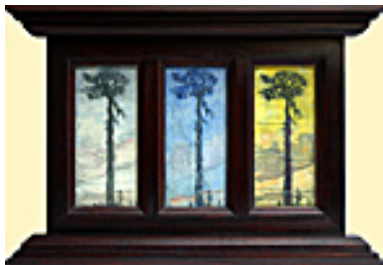
152666

MAYHEW, NELL BROOKER.

On Pilgrim's Path, c 1905

7.5 x 8 inches | Etched monotype.

Signed.



114025

MAYHEW, NELL BROOKER.

Only God can Make a Tree (Triptych), circa 1905

22.25 x 35 inches | Etched

Signed



114493

MCADAMS, L.L..

Green Eyes,

12 x 12 inches | Oil on canvas.

Signed lower left.



114494

MCADAMS, L.L..

Red Lips,

12 x 12 inches | Oil on canvas.

Signed lower left.



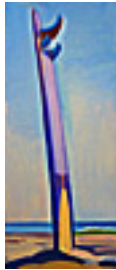
114301

PITCHER, HANK.

Al Merrick and Surfer, 2003.

6 x 14 inches | Oil on board.

Signed lower right.



114526

PITCHER, HANK.

Purple Takayama, 2003.

14 x 6 inches | Oil on Board.

Unsigned.



113454

PITCHER, HANK.

Bulito, Gaviota Coast, 2003.

6 x 14 inches | Oil on board.



113455

PITCHER, HANK.

A Walk on Butterfly Beach, 12/31/02.

6 x 14 inches | Oil on board.

Signed lower right.



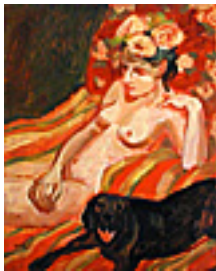
114331

PITCHER, HANK.

Big Wave at Dawn, 2002.

6 x 14 inches | Oil on Board.

Signed lower left.



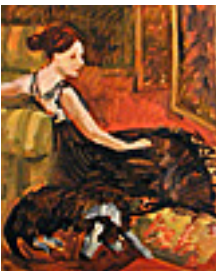
114517

SEABERRY, SUSAN.

Nude with Rose Hat and Sadie, 2003.

8 x 10 inches | Oil on board.

Signed.



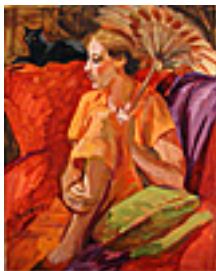
114518

SEABERRY, SUSAN.

Woman in Black Lace Gown, 2003.

8 x 10 inches | Oil on board.

Signed.



114519

SEABERRY, SUSAN.

Young Woman in Bali, 2003.

8 x 10 inches | Oil on board.

Signed.

114590

SEABERRY, SUSAN.

Miss Lee and Her Dog, 2003.

8 x 10 inches | Oil on board.

Signed.

114591

SEABERRY, SUSAN.

Sara In The Chinese Jacket, 2003.

8 x 10 inches | Oil on board.

Signed.

114592

SEABERRY, SUSAN.

Studio Visit, 2003.

8 x 10 inches | Oil on board.

Signed.

114593

SEABERRY, SUSAN.

Dancer at Rest, 2003.

9 x 12 inches | Oil on board.

Signed.



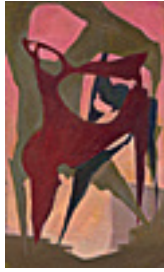
113960

SKLAR, DOROTHY.

Harlequins on the Stage, 1951

13.5 x 19.25 inches | Oil on board

Signed upper right



113569

SLATER, MIRIAM.

Arabesquing Forms, 1988.

5 x 3.75 inches | Oil on masonite

Unsigned.



114320

SLATER, MIRIAM.

Landscape, 1989.

7.125 x 6 inches | Oil on board.

Signed lower right.



114220

SMITH, JACK R..

Portrait of Kevin Canon, 2003.

6 x 6 inches | Oil on copper.

Signed lower right.



114219

SMITH, JACK R..

Portrait of Diane Bushburg, 2003.

6 x 6 inches | Oil on copper.

Signed lower right.



127693

SMITH, JACK R..

Portrait of Neil Libbert, 2003.

6 x 6 inches | Oil on copper.

Signed lower right.



114432

SOBIESKI, ANN ELIZABETH.

Saint James,

9 x 12 inches |

Signed lower left.



114433

SOBIESKI, ANN ELIZABETH.

Girl with Pearls,

9 x 12 inches |

Signed lower left.

114385

STRASBURG, NICOLE.

East Beach, #1, 2003.

3.5 x 5.5 inches | Oil on birch panel.

Signed on back.

114386

STRASBURG, NICOLE.

East Beach, #2, 2003.

3.5 x 5.5 inches | Oil on birch panel.

Signed on back.



114510

STRASBURG, NICOLE.

Shallows, 2003.

4 x 12 inches | Oil on birch panel.

Signed on back.



114511

STRASBURG, NICOLE.

17 Mile Drive, 2003.

4 x 12 inches | Oil on birch panel.

Signed on back.



114512

STRASBURG, NICOLE.

Point Break, 2003.

4.5 x 10.5 inches | Oil on birch panel.

Signed on back.



114383

STRASBURG, NICOLE.

Sky Sea, 2001.

8 x 9 inches | Oil on birch panel.

Signed on back.



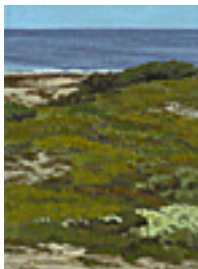
114384

STRASBURG, NICOLE.

Campus Point, 2001.

8 x 10 inches | Oil on birch panel.

Signed on back.



114516

STRASBURG, NICOLE.

Asilomar, 2003.

12 x 8.75 inches | Oil on birch panel.

Signed on back.



114514

STRASBURG, NICOLE.

Tides Edge, 2003.

8 x 24 inches | Oil on birch panel.

Signed verso.



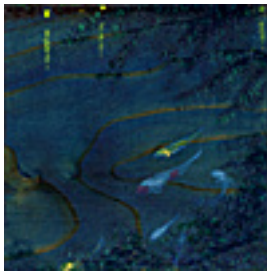
114515

STRASBURG, NICOLE.

Edge Tide, 2003.

8 x 24 inches | Oil on birch panel.

Signed on back.



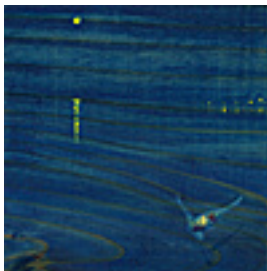
114387

THOMAS, JAMES DAVID.

Night Pool Series, #3, 2003.

5 x 5 inches | Oil on Panel.

Signed on back.



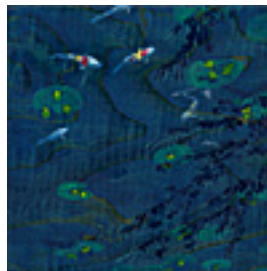
114388

THOMAS, JAMES DAVID.

Night Pool Series, #5, 2003.

5 x 5 inches | Oil on panel.

Signed on back.



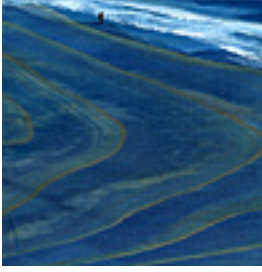
114389

THOMAS, JAMES DAVID.

Night Pool Series, #4, 2003.

5 x 5 inches | Oil on panel.

Signed on back.



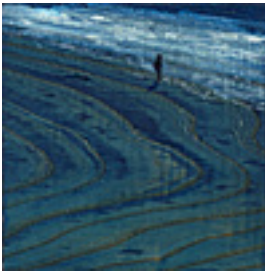
114390

THOMAS, JAMES DAVID.

November Haiku for Homer, 2003.

5 x 5 inches | Oil on panel.

Signed on back.



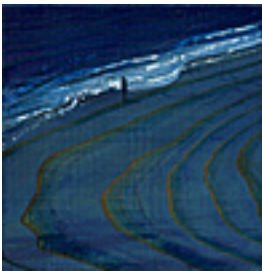
114391

THOMAS, JAMES DAVID.

November Nocturn for Friedrich, 2003.

5 x 5 inches | Oil on panel.

Signed on back.



114392

THOMAS, JAMES DAVID.

Siren, 2003.

5 x 5 inches | Oil on Panel.

Signed on back.



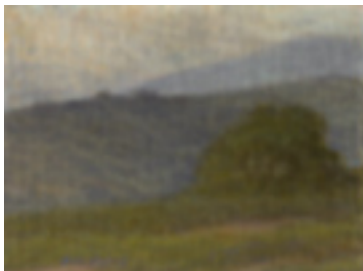
114505

VEDDER, SARAH.

Oaks in Valley, 2003.

6 x 8 inches | Oil on board.

Signed lower right.



114506

VEDDER, SARAH.

Oaks on Hillside, 2003.

6 x 8 inches | Oil on board.

Signed lower right.



114503

VEDDER, SARAH.

Barns in Valley, Santa Cruz Island, 2000.

8 x 10 inches | Oil on canvas.

Signed lower right.



114504

VEDDER, SARAH.

Slough Morning, 2000.

10 x 8 inches | Oil on canvas.

Signed lower right.

114338

WARSHAW, HOWARD.

Yawning Chimp,

3.75 x 3.25 inches | Ink and

Unsigned.

114339

WARSHAW, HOWARD.

Awkward Ape, C. 1975.

3.5 x 3.25 inches | Ink and

Unsigned.

114343

WARSHAW, HOWARD.

Creature in Green,

3.5 x 3.25 inches | Ink and

Unsigned.

114347

WARSHAW, HOWARD.

Dinosaur in Blue and Brown,

3.375 x 3.5 inches | Ink and graphite

Unsigned.

114350

WARSHAW, HOWARD.

Wide Eyed Creature,

3.5 x 3.375 inches | Ink and

Unsigned.

114351

WARSHAW, HOWARD.

Brown Monkey on Tan,

3.5 x 3.5 inches | Ink and watercolor

Unsigned.



114358

WARSHAW, HOWARD.

Horse Leg Study,

7 x 7.625 inches | Graphite and

Signed lower right.

114360

WARSHAW, HOWARD.

Horse in Motion Study,

8.75 x 4.75 inches | Ink and ink wash.

Unsigned.



114362

WARSHAW, HOWARD.

Hind Quarter, Horse Study,

7 x 7.75 inches | Ink, ink wash,

Unsigned.



114454

WARSHAW, HOWARD.

Composition of Crumpled Paper,

7 x 7 inches | Watercolor and ink on

Unsigned



114363

WARSHAW, HOWARD.

Figure Study on a Stool, 1966

7 x 7.75 inches | Ink, ink wash,

Single initial and date lower right.



114366

WARSHAW, HOWARD.

Horse at Rest Study,

7 x 7.75 inches | Pen, graphite, and

Signed lower left.