



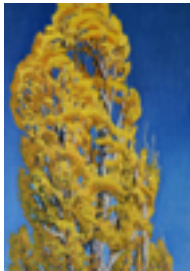
114237

DRURY, MICHAEL.

Wind Timber at Santa Barbara Point, 2003.

12 x 16 inches | Oil on panel.

Signed lower right.



114143

DRURY, MICHAEL.

Poplars in Fall Colors - Northern Nevada, 1999-2003.

16 x 11 inches | Oil on board.

Signed on back.



114162

DRURY, MICHAEL.

The Next Morning - Sedgwick Ranch, 2003.

12 x 20 inches | Oil on Board.

Signed, dated, titled verso.



114160

DRURY, MICHAEL.

North Coast Windbreak, 2002.

16 x 20 inches | Oil on Board.

Signed on back.



114163

DRURY, MICHAEL.

Temple of Agriculture, #2, 2003.

16 x 20 inches | Oil on board.

Signed on back.



114147

DRURY, MICHAEL.

Rock and Clouds - Claddaghduff, 2003.

16 x 25 inches | Oil on board.

Signed on back.

114151

DRURY, MICHAEL.

Peace in November, 2002.

15 x 25 inches | Oil on board.

Signed on back.



114156

DRURY, MICHAEL.

Low Tide in Caskel Bay, 2003.

15 x 25 inches | Oil on board.

Signed on back.



114157

DRURY, MICHAEL.

Windy Afternoon at Kehoe's, 2003.

16 x 24 inches | Oil on board.

Signed, dated, titled verso.



114164

DRURY, MICHAEL.

Great Basin Barn, 2002.

16 x 24 inches | Oil on Board.

Signed on back.



114170

DRURY, MICHAEL.

On Omey Strand, 2003.

15 x 25 inches | Oil on board.

Signed on back.



114144

DRURY, MICHAEL.

Kehoe's Rocks, 2001.

20 x 24 inches | Oil on board.

Signed on back.



114145

DRURY, MICHAEL.

Ghost House at Point Conception, 2003.

20 x 24 inches | Oil on board.

Signed on back.



114153

DRURY, MICHAEL.

Trees and Flowers - Wilcox, 2003.

25 x 20 inches | Oil on board.

Signed on back.



114159

DRURY, MICHAEL.

Barber Ranch Poplars, 2002.

20 x 24 inches | Oil on board.

Signed, dated, titled verso.



114161

DRURY, MICHAEL.

Ranch House Trees, 2003.

20 x 24 inches | Oil on Board.

Signed on back.



114165

DRURY, MICHAEL.

Sand Creek Escapement, 2002.

18 x 30 inches | Oil on canvas.

Signed on back.



114169

DRURY, MICHAEL.

Jim Cockrell's Barn, 2003.

20 x 25 inches | Oil on board.

Signed on back.



114149

DRURY, MICHAEL.

Temple of Agriculture, #1, 2002.

21 x 36 inches | Oil on canvas.

Signed on back.



114171

DRURY, MICHAEL.

Cumulus Clouds over the Gavilans - Salinas Valley, 2003.

25 x 30 inches | Oil on canvas.

Signed on back.



114173

DRURY, MICHAEL.

Cold Front, Point Conception, 2003.

21 x 36 inches | Oil on canvas.

Signed on back.



114150

DRURY, MICHAEL.

Pierce Point Ranch House, 2002.

24 x 36 inches | Oil on canvas.

Signed on back.



114166

DRURY, MICHAEL.

Morning Light, Northern Headland, 2002.

24 x 36 inches | Oil on canvas.

Signed on back.



114174

DRURY, MICHAEL.

Summer Trail, Gaviota, 2003.

24 x 36 inches | Oil on canvas.

Signed on back.



114146

DRURY, MICHAEL.

November Green, 2003.

25 x 40 inches | Oil on board.

Signed on back.



114148

DRURY, MICHAEL.

March Afternoon, Points North, 2003.

16 x 48 inches | Oil on canvas.

Signed on back.



114152

DRURY, MICHAEL.

Summer Evening - Gaviota, 2003.

24 x 40 inches | Oil on canvas.

Signed on back.



114154

DRURY, MICHAEL.

Fall Evening at Cockerell's, 2002.

16 x 48 inches | Oil on canvas.

Signed on back.



114167

DRURY, MICHAEL.

Before Dawn at Black Mountain, 2002.

16 x 48 inches | Oil on canvas.

Signed on back.



114172

DRURY, MICHAEL.

Fall Evening from Owl Creek, 2003.

16 x 48 inches | Oil on canvas.

Signed on back.



114155

DRURY, MICHAEL.

Winter Morning Light, Black Mountain, 2002.

36 x 50 inches | Oil on canvas.

Signed on back.



114158

DRURY, MICHAEL.

Hallowe'en Morning in Northern Nevada, 2002.

24 x 60 inches | Oil on canvas.

Signed, dated, titled verso.