

113686

BENNEY, ROBERT.

Going Home, c. 1943.

19 x 15 inches | Graphite on paper.

Signed LR.



113713

BENTON, THOMAS HART.

The Singing, 1926.

12 x 9 inches | Other.

Signed lower left.



113260

COOPER, COLIN CAMPBELL.

On the Dyke near Monnickendam, North Holland, Circa

7.75 x 14 inches | Pen and ink on

Signed lower left.



113261

COOPER, COLIN CAMPBELL.

Sunset near Monnickendam, North Holland, Circa 1887.

3.75 x 9.25 inches | Pen and ink on

Signed lower left.



113257

COOPER, COLIN CAMPBELL.

Academic Still Life -With "Arcadia" Plaque by Eakins,

15 x 10 inches | Pen and ink on

Signed LL.



108608

COOPER, COLIN CAMPBELL.

Yellow Sun Over Hills, Circa 1920

4.375 x 6.5 inches | Watercolor on

Estate stamped.



112230

COOPER, COLIN CAMPBELL.

Standing Male Nude , Nov 30, 1889

25 x 17 inches | Charcoal on paper.

Signed right center.

112241

COOPER, COLIN CAMPBELL.

Standing Female Nude ,

24.5 x 14.5 inches | Charcoal on

Signed lower right.



113958

CRAIG, TOM.

Town near Hills, 1940's.

14.25 x 21.5 inches | Watercolor on

Signed lower left.

113716

CRONAU, RUDOLF.

In the Grand Canyon Near Diamond Colorado,

20 x 14.5 inches | Pen and ink on



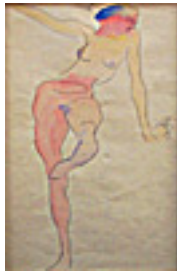
113428

DE ERDELY, FRANCIS.

Los Angeles Scene,

11.25 x 16 inches | Ink on paper

Signed lower right



113965

DEMUTH, CHARLES.

Female Nude Figure Number Five, C. 1912.

12 x 6.5 inches | Watercolor on



113673

FEITELSON, LORSER.

Purple Nude, 1922

10.5 x 7.5 inches | Pencil on paper

Signed lower left

113718

FRIESKE, FREDERICK CARL.

Interior, Holland, 1898

12 x 9.75 inches | Watercolor on

Signed lower left.

113728

GERRY, SAMUEL LANCASTER.

Landscape: Bridge over a Waterfall,

31 x 23.75 inches | Gouache on

Signed lower left.

113736

HABERLE, JOHN.

Little Dutch Girl , Feb. 12, 1886.

8.5 x 4.5 inches | Pencil on paper.

Signed lower right.



113704

HASSAM, CHILDE.

San Pietro, Venice, 1883.

8 x 11 inches | Watercolor on paper.

Signed lower left.

113727

HEADE, MARTIN JOHNSON.

Thousand Island, Lakefront , n.d.

6.5 x 10 inches | Pencil on paper.

Unsigned.

113724

HUNT, WILLIAM MORRIS.

Landscape Sketch, n.d.

5 x 7 inches | Charcoal on paper.

Unsigned.

113735

HUNTINGTON, DANIEL.

Tree Study , July 31, 1872.

9.25 x 6.3125 inches | Pencil on

Signed lower right.

113714

JAMES, WILL.

Steer Wrestler, 1921.

8.16 x 10.3125 inches | Pen and ink

Signed lower right.

113741

JOHNSON, DAVID.

Apple Tree, Plainfield, New Jersey , 1892.

9.75 x 13.25 inches | Pencil on

Signed lower left.



113734

JOHNSON, EASTMAN.

Off to work , N.d.

17.5 x 10.5 inches | Pen and ink on

Signed lower right.

113740

KNIGHT, DANIEL RIDGEWAY.

Standing Woman with Sickle , n.d.

14 x 10 inches | Pencil on paper.

Unsigned.

113687

LUDINGTON, WRIGHT.

California Balcony,

14.75 x 13.75 inches | Charcoal on

Signed lower left.



113564

MACDONALD-WRIGHT, STANTON.

Double-Sided Nude Studies, C 1922-1930

18 x 10 inches | Graphite on Paper

Estate Stamped and dated 1922-1930



111276

MESSICK, BEN.

The Big Cat Proof #6,

11.5 x 12.5 inches | Woodblock.

Signed.

108943

MESSICK, BEN.

Sad Clown With Pink Collar and Cap, 1940's.

10.75 x 8.25 inches | Pencil on

Estate stamped.

109613

MESSICK, BEN.

The Lion Tamer, 1930's.

10.25 x 12.25 inches | Charcoal on

Estate stamped.

113725

MILLER, ALFRED JACOB.

Preparing to Fish , n.d.

4.125 x 6.75 inches | Pen and ink on

Unsigned.



113717

MILLER, WILLIAM RICKARBY.

Figures by the River,

12.5 x 20 inches | Watercolor on

113726

MORAN, PETER.

On the Riverfront , n.d.

4.125 x 6.75 inches | Watercolor on

Unsigned.

101425

PARSHALL, DOUGLASS.

Oak, Tree and Rocks, 1966 on verso

7 x 9 inches | Pen and ink on paper.

Signed on back.



113738

RANGER, HENRY WARD.

The Foot Path, Holland , Circa 1880s.

13 x 10 inches | Watercolor on

Signed lower left.

113742

RICHARDS, WILLIAM TROST.

[Lord] Tennyson's Farm, Farmington, Isle of Wight, 1880.

9.625 x 14.0625 inches | Gouache

Signed lower right.

113743

SMITH, FRANCIS HOPKINSON.

Along the Canal (Dordrecht), n.d.

13.125 x 23.125 inches | Mixed

Signed lower left.

113739

TWACHTMAN, JOHN HENRY.

Landscape with Trees (Late Spring, Connecticut) , c.

12 x 16 inches | Pastel on Paper.

Signed lower right.



113988

WARSHAW, HOWARD.

Deposition, After Pontormo? Tintoretto?, C 1970

13.5 x 8.5 inches | Pen and Ink Wash

Signed lower right.

113989

WARSHAW, HOWARD.

Horse Study, C. 1965.

7 x 8.25 inches | Pen and Ink Wash

Signed lower left.

113701

WHISTLER, JAMES ABBOTT MCNEILL.

Shop Fronts, n.d.

5.125 x 3.675 inches | Pen and ink on

Signed right center.