



106496

RYE, BJORN.

Nocturne Through my Window Overlooking the Sea,

6 x 4 inches | Oil on board

Signed lower right



111254

HARCOFF, LYLA MARSHALL.

Three Beach Figures, One Standing, 1930s

16 x 14 inches | Oil on canvas

Unsigned



111742

LUTZ, DAN.

River Landing, 1950

11 x 14 inches | Oil on canvas

Signed



113556

MACDONALD-WRIGHT, STANTON.

Synchromy, Early 1950s

10.5 x 4.5 inches | Oil on Canvas on

Unsigned



114609

LUTZ, DAN.

Adolescence, 1950.

14 x 11 inches | Oil on masonite.

Signed lower right.

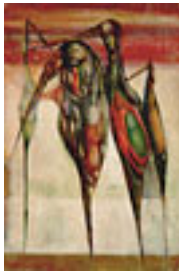


127600

MCCRACKEN, JOHN.

5A - 82, 1982.

7.38 x 11 inches | Watercolor on
Signed lower right.



127733

KELLY, LEON.

Birds of Silence, 1946

9 x 6 inches | Oil on canvas

Signed and dated lower right Signed,



127736

WARSHAW, HOWARD.

Stone and Claw, 1947

8 x 12.25 inches | Oil on Canvas

Signed and dated lower right



127785

SPARKS, GAR.

Untitled (Figures in a Bar) , 1947

9 x 7 inches | Oil on Board

Signed lower left and signed and



127877

COOPER, COLIN CAMPBELL.

Italian Church Interior, Circa 1930

8.25 x 4.75 inches | Mixed media on

Signed lower right



127878

COOPER, COLIN CAMPBELL.

European Church at Sunset, Circa 1930.

4.75 x 8.25 inches | Mixed media on

Signed lower right.



127945

EWING, EDGAR.

To Linda with Love, nd

9 x 8 inches | Pen and ink on paper.

Signed lower right.



127990

PARSHALL, DEWITT.

Kairouan, Tunisia, June 12, 1928

12 x 15 inches | Oil and pastel on

Other



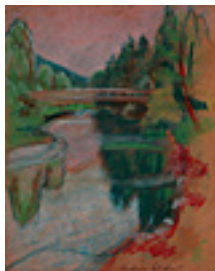
149446

ALDRIN, ANDERS.

Bridge House with Mauve Sky,

12 x 13.5 inches | Oil on canvas

Signed lower right



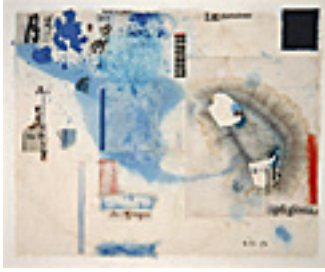
149572

ALDRIN, ANDERS.

Bridge over Stream,

13 x 10 inches | Pastel on paper

Signed lower right



149595

DOLE, WILLIAM.

Gesture, 1974

7 x 8.5 inches | Mixed media on

Signed lower right



149927

ABERCROMBIE, GERTRUDE.

Still Life - Shell, 1951

3 x 3.5 inches | Oil on board

Signed lower left



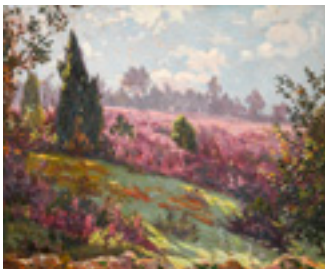
150197

WILDE, JOHN.

Skulls of Small Mammals, 1973

9 x 14.875 inches | Oil on board

Signed on back



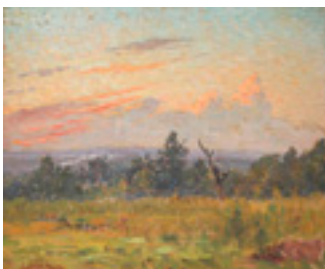
150418

BIVA, LUCIEN.

Green and Lavender Landscape,

8.75 x 10.5 inches | Oil on artist's

Signed lower left



150423

BIVA, LUCIEN.

Warm Sunset,

8.5 x 10.25 inches | Oil on artist's

Signed lower left



150513

MAYHEW, NELL BROOKER.

A Bit of Yesterday, Capistrano Mission,
9.75 x 7 inches | Etched monotype.
Signed.



150514

MAYHEW, NELL BROOKER.

Villa Apartments,
7 x 3.5 inches | Etched monotype.
Signed.



150576

PITCHER, HANK.

Four Surfers at Campus Cove at Dusk, 2004
6 x 14 inches | Oil on board
Other



150731

STONEHOUSE, FRED.

Bird, 1999

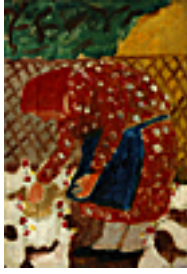
5 x 3.75 inches | Acrylic on board
Signed on back



150850

ABERCROMBIE, GERTRUDE.

Still Life - Leaf, Shell, and Jacks, 1957
5 x 4 inches | Oil on board
Signed lower left



150960

GROOMS, RED.

Untitled (Feeding Chickens), 1961

11.75 x 8 inches | Oil on canvas

Signed on back



150966

ABRAMOFSKY, ISRAEL.

The Temple, c 1940 (?)

10 x 8 inches | Oil on panel

Signed lower right



151281

VEDDER, SARAH.

Flood Tide, MacKerricher, 2006

9 x 12 inches | Oil on panel

Signed on back



151316

STRONG, RAY.

Farm, Early 1950s

6.5 x 12 inches | Oil on board

Signed lower right



151354

DU BOIS, GUY PENE.

The du Bois Class, 1942

9.75 x 14 inches | Pastel on paper

Signed lower left



151440

GOWEN, ROBIN.

Heat of Day I, 2007.

6 x 10 inches | Oil on board.

Signed lower left.



151790

SMITH, JACK R..

Jetsam Series I: Bottle Cap, 2005.

6 x 6 inches | Watercolor on paper.

Signed lower right.



151791

SMITH, JACK R..

Jetsam Series 2: Candy, 2005.

6 x 6 inches | Watercolor on paper.

Signed lower right.



151792

SMITH, JACK R..

Jetsam Series 3: Bent Metal, 2005.

6 x 6 inches | Watercolor on paper.

Signed lower right.



151799

GORDIN, SIDNEY.

Abstract Surrealist Drawing, c 1942

10.75 x 8.375 inches | Ink on paper.

Estate signed.



151800

GORDIN, SIDNEY.

Constructivist Bird, c 1942

10.75 x 8.375 inches | Ink on paper

Estate signed



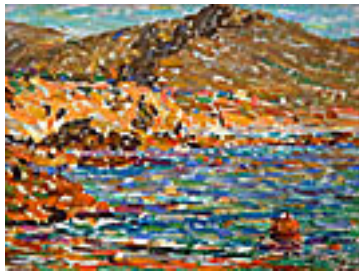
151853

SMITH, JACK R..

Jetsam Series 4: Salt Shaker, 2005.

6 x 6 inches | Watercolor on paper.

Signed lower right.



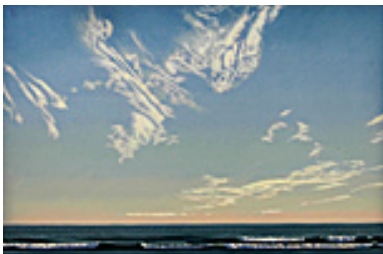
151913

HINKLE, CLARENCE.

Surf, Hills - Laguna, 1920.

10.5 x 13.75 inches | Oil on board.

Signed lower right.



152142

LIGARE, DAVID.

Equivalent III, 2003

12 x 18 inches | Oil on canvas

Signed on back



152211

BORTOLAZZO, KEN.

Fan, 2008.

17.5 x 15.75 x 4 inches | Stainless

Other.



152501

PERKO, ANGELA.

Lake Piru, 2008.

10 x 8 inches | Oil on canvas.

Signed lower right.



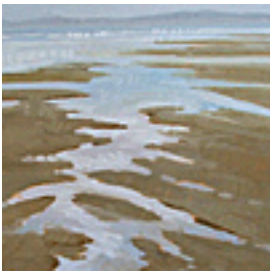
152509

STRASBURG, NICOLE.

Afternoon Storm, 2006.

12 x 12 inches | Oil on board.

Signed on back.



152510

STRASBURG, NICOLE.

Tide Puddles, 2006.

12 x 12 inches | Oil on board.

Signed on back.



152513

ENTICKNAP, PAMELA HILL.

Beach Black Birds #2, 2008

8 x 10 inches | Oil on canvas

Signed on back



152515

ENTICKNAP, PAMELA HILL.

Beach Black Birds #1, 2008

8 x 10 inches | Oil on canvas

Signed on back



152520

MERCADO, JAY.

Orange Lime, 2008.

7 x 7 inches | Oil on canvas.

Other.



152521

MERCADO, JAY.

Besbol, 2008.

12 x 12 inches | Oil on canvas.

Other.



152522

HAGGERTY, JAMES.

Bowl, Smoked Blue Gray Gold, 2008

2.625 x 5.875 x 5.875 inches |

Signed.



152523

HAGGERTY, JAMES.

Bowl, Blue Gold Crater, 2008

6 x 6 x 3.375 inches | Ceramic.

Signed.



152528

PERKO, ANGELA.

Small Nude, Light and Shadow, 2008.

11.5 x 5.5 inches | Oil on canvas.

Signed.



152529

PERKO, ANGELA.

Standing Figure in Yellow, 2008.

11.5 x 5.5 inches | Oil on canvas.

Signed.



152531

BORTOLAZZO, KEN.

Sgraffito I, 2008

7 x 5 inches | Other

Other



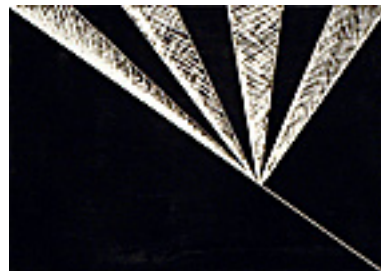
152532

BORTOLAZZO, KEN.

Sgraffito II, 2008.

7 x 5 inches | Other.

Other.



152533

BORTOLAZZO, KEN.

Sgraffito III, 2008

7 x 5 inches | Other

Other



158267

MAYHEW, NELL BROOKER.

Villa Apartments,

7 x 3.5 inches | Etched monotype.

Signed.



159646

LUTZ, DAN.

River Landing, 1950

11 x 14 inches | Oil on canvas

Signed