



**162023**

ABBOTT, MEREDITH BROOKS.

Oak Leaf Hydrangea, 2014

24 x 36 inches | Oil on canvas

Signed lower left



**162121**

ABBOTT, WHITNEY BROOKS.

2 GMCs,

18 x 24 inches | Oil on canvas

Signed lower left



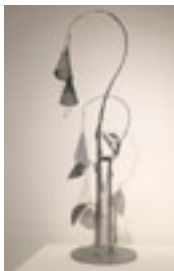
**162122**

ABBOTT, WHITNEY BROOKS.

Mariposa after Wildfire,

18 x 24 inches | Oil on canvas

Signed lower left



**160428**

BORTOLAZZO, KEN.

Two Hanging Blossoms, 2016

24 x 8 x 6 inches | Stainless steel

Signed



**162196**

CHIDLAW, PATRICIA.

Red Shoes, 2019

35 x 24 inches | Oil on canvas

Signed



**162126**

**ON HOLD**

COMER, JOHN.

Golden Hills with Live Oaks,

36 x 48 inches | Oil on canvas over

Signed lower right



**155333**

DABO, LEON.

Abstraction Avec un Zinnia, c 1915

18 x 12 inches | Pastel on paper

Signed lower right



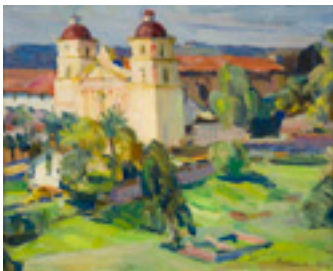
**159914**

EL-BERMANI, ALIA.

White Orchid, 2015

12 x 12 inches | Oil on panel

Signed lower left



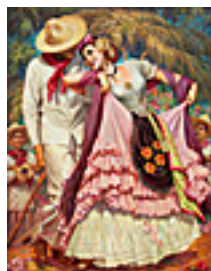
**162084**

FORTUNE, E. CHARLTON.

Santa Barbara Mission, 1928

9 x 10.5 inches | Oil on board

Signed lower right



**151231**

HELGUERA, JESUS.

La Bamba, c. late 1940s

51 x 39 inches | Oil on canvas

Signed lower right



**162189**

LEWIS SIGLER, LESLIE.

Silver Spoon #127, The Out-of-Towner, 2017

12 x 5 inches | Oil on panel

Signed lower right



**162190**

LEWIS SIGLER, LESLIE.

Silver Spoon #119, The Eccentric, 2017

12 x 5 inches | Oil on panel

Signed on back



**162191**

LEWIS SIGLER, LESLIE.

Silver Spoon #47, The Maestro, 2016

12 x 5 inches | Oil on panel

Signed lower right



**162193**

LEWIS SIGLER, LESLIE.

The Globetrotter, 2017

10 x 8 inches | Oil on panel

Signed lower right



**162194**

LEWIS SIGLER, LESLIE.

The Trespasser, 2019

10 x 8 inches | Oil on panel

Signed lower right

**ON HOLD**



**160612**

MARBLE, JOHN NELSON.

Mission Santa Barbara, View Towards Channel, c. 1881

6 x 10 inches | Watercolor on paper

Signed lower left



**162186**

MONZON, RICK.

The Hampstead, 2019

17.125 x 36 inches | Oil on panel

Signed on back



**160610**

NAVA, JOHN.

Tall Tulips, 1996

60 x 30 inches | Oil on canvas over

Signed on back



**160110**

SERISAWA, SUEO.

Portrait of Lady with Fan, c. 1930s

24 x 20 inches | Oil on canvas.

Unsigned.



**160605**

SIMONS, WILL.

Fir, 2016

6 x 4 x 4 inches | Ceramic

Signed



**162021**

STRONG, RAY.

McClure's Ranch, Pierce Point, c. 1960

24 x 48 inches | Oil on board

Signed lower left