

112467

BRAUN, MAURICE.

Landscape,

20 x 24 inches | Oil on canvas.

Signed lower right.



112358

CARMEAN, HARRY.

Standing Nude Bather, 1984.

28 x 18 inches | Oil on canvas.

Signed lower right.



111993

CARMEAN, HARRY.

Six Acrobats with Ballerinas in Blue in Background, 1988

36 x 36 inches | Oil on canvas.

Signed lower left.



112352

CARMEAN, HARRY.

Cafe Scene with Violinist, 1996.

48 x 48 inches | Oil on canvas.

Signed lower right.



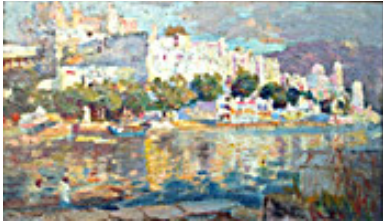
112050

CLARK, ALSON.

View towards Mt Wilson, c. 1933.

13.5 x 17.5 inches |

Signed.



107281

COOPER, COLIN CAMPBELL.

City on the River,

4.25 x 6.5 inches | Pencil on paper.

Estate Stamped.



112486

COOPER, COLIN CAMPBELL.

New England Harbor Scene, 1900's.

5 x 8.62 inches | Oil on Board.

Signed lower left.



112488

COOPER, COLIN CAMPBELL.

Stressa, June 25th, 1924, 1924.

4.75 x 7 inches | Gouache.

Signed lower left.



112479

COOPER, COLIN CAMPBELL.

Looking East at 4:30 - Cloud Study, 1920's.

7 x 11.625 inches | Oil on board.

Signed lower right.



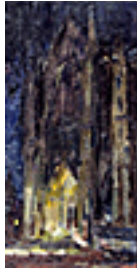
112484

COOPER, COLIN CAMPBELL.

Chateau at Vitrie, France, 1910

7 x 11.625 inches | Oil on board.

Estate signed



112478

COOPER, COLIN CAMPBELL.

Cathedral at Beauvais, Nocturne, 1890's.

11.62 x 7 inches | Oil on board.

Signed on back.



112480

COOPER, COLIN CAMPBELL.

Bunaris, India 1914, 1914.

7 x 11.62 inches | Oil on board.

Signed lower left.



112485

COOPER, COLIN CAMPBELL.

Pastel Sun Setting in Ocean, 1920's.

11.62 x 7 inches | Pastel on board.

Signed.



112487

COOPER, COLIN CAMPBELL.

The Victory Arch, 1919.

4.75 x 7 inches | Gouache on

Signed.

112481

COOPER, COLIN CAMPBELL.

City Scene, Near River, 1890's.

7 x 11.62 inches | Oil on board.

Signed lower left.



112214

COOPER, COLIN CAMPBELL.

Standing Male, 1890.

23.5 x 14 inches | Oil on canvas.

Signed lower left.



112483

COOPER, COLIN CAMPBELL.

Two Figures on Shore, 1910.

11.62 x 7 inches | Oil on board.

Signed lower right.



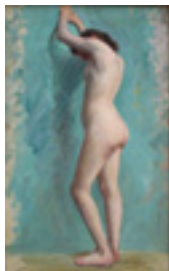
112599

COOPER, COLIN CAMPBELL.

Fiesta, Spanish Village, 1890's.

7 x 11.625 inches | Oil on board.

Signed lower left.



110012

COOPER, COLIN CAMPBELL.

Standing Female Nude,

31.5 x 19.5 inches | Oil on canvas.



106364

COOPER, COLIN CAMPBELL.

View of the Church, Old Lyme, Connecticut ,

17.5 x 14.5 inches | Other.

Signed lower left.



106412

COOPER, COLIN CAMPBELL.

Hunter College, New York City, c 1910

40 x 25 inches | Oil on canvas

Signed lower right



112187

COOPER, COLIN CAMPBELL.

View of Steamship Carpathia passing along the edge of

8.5 x 14 inches | Gouache on

Signed lower left.



112188

COOPER, COLIN CAMPBELL.

Rescue of the survivors of the Titanic by the SS Carpathia

8.5 x 14 inches | Gouache on

Signed lower right.



107235

DE FOREST, LOCKWOOD.

Carmel Seashore and Pine, ND.

9.75 x 14 inches | Oil on board.

Unsigned.



110454

DE FOREST, LOCKWOOD.

Salton Sea from Present Lake Shore - Mecca, Dated

9.75 x 14.12 inches | Oil on board.

Signed lower left.



105574

DE FOREST, LOCKWOOD.

View From Romero Ridge to the Rincon, December

9.75 x 14 inches | Oil on board.

Signed lower right.

112449

DE FOREST, LOCKWOOD.

Lake Wooley (?) Kashmire, January 2, 1881.

9.75 x 14 inches | Oil on board.

Signed lower left.



106112

DE FOREST, LOCKWOOD.

Winter Tree Study,

9.5 x 14.25 inches | Oil on board.

Unsigned.



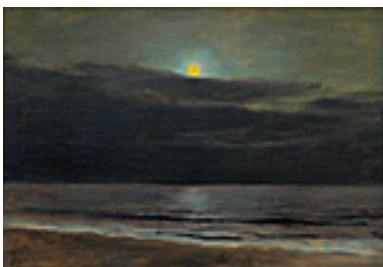
105726

DE FOREST, LOCKWOOD.

Through the Cypress Trees, Monterey, Circa 1910

9.5 x 14.25 inches | Oil on board.

Signed lower left.



105261

DE FOREST, LOCKWOOD.

Moonlight Over Cloudy Pacific Sky, February 10, 1906.

9.5 x 14.25 inches | Oil on Artists

Signed lower left.



105263

DE FOREST, LOCKWOOD.

Waning Moonlight Over California Shoreline, April 17,
9.5 x 14.25 inches | Oil on board.

Signed lower left.



105568

DE FOREST, LOCKWOOD.

September Moonrise, York Harbor, Maine, Sep. 25, 1907.
| Oil on board.

Signed and Dated LL.



105682

DE FOREST, LOCKWOOD.

Clouded Moonlight Over Pacific, ND.
9.75 x 14 inches | Oil on canvas.

Signed lower left.

112466

DE LONGPRE, PAUL.

California Poppies, 1900

20 x 17.5 inches |

Signed lower left.



112450

DE VESCOVI, ELY.

Stravinsky Mosaic, Circa 1950's.

12 x 16 inches | Other.

Signed lower left.

107737

FISHER, ANYA.

Russian Countess , 1975

30 x 24 inches | Oil on canvas.

Signed lower left.



110052

FISHER, ANYA.

Russian Madonna, Circa 1975

30 x 24 inches | Oil on canvas.

Signed lower right.



112098

GLEASON, DUNCAN.

Seated Female Nude , c. 1920.

21 x 15.5 inches | Oil on canvas.

Unsigned.



112099

GLEASON, DUNCAN.

Standing Female Facing Left , c. 1920.

21 x 15.75 inches | Oil on canvas.

Unsigned.



112100

GLEASON, DUNCAN.

Standing Female Facing Right , c. 1920.

21 x 15.75 inches | Oil on canvas.

Unsigned.



110511

GROESBECK, DANIEL SAYRE.

Nude with Blossoms, Circa 1900s

14.5 x 14.5 inches | Gouache on

Signed lower left.



112213

HARCOFF, LYLA MARSHALL.

Reclining Nude, 1940.

15 x 30 inches | Oil on canvas

Signed lower right



111717

HARCOFF, LYLA MARSHALL.

Woman in Mirror,

30 x 24 inches | Oil on canvas.

Signed lower right.



112328

HOLMES, RALPH.

Fall Sunset, nd

30 x 24 inches | Oil on canvas

Signed lower right



111732

LUTZ, DAN.

Colorful Facade, 1968.

24 x 36 inches | Oil on canvas.

Signed lower right.



111726

LUTZ, DAN.

Man in a Boat,

24 x 30 inches | Oil on canvas.

Signed lower right.



112041

LUTZ, DAN.

Midday, Oaxaca, 1965.

20 x 24 inches | Oil on canvas.

Signed left center.



111750

LUTZ, DAN.

Village In Autumn, 1954.

24 x 36 inches | Oil on canvas.

Signed lower right.



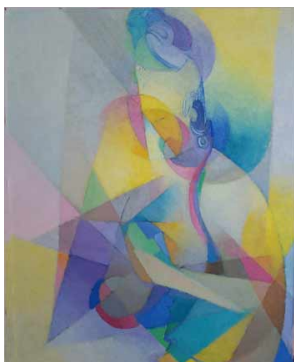
112227

LUTZ, DAN.

Triad, 1950.

30 x 24 inches | Oil on canvas.

Signed LR.



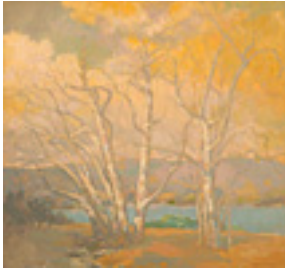
112490

MACDONALD-WRIGHT, STANTON.

Seishe Bosatsu, Kyoto (Buddha of Wisdom), 1964

30 x 24 inches | Oil on Board.

Signed on back.



112463

MCGLYNN, THOMAS.

Fall Sycamores, c. 1930s

36 x 34 inches | Oil on canvas

Signed lower right



108909

MESSICK, BEN.

Polo Study - Two Riders Fighting For the Ball, 1940's

11.25 x 13.5 inches | Other.

Signed lower left.



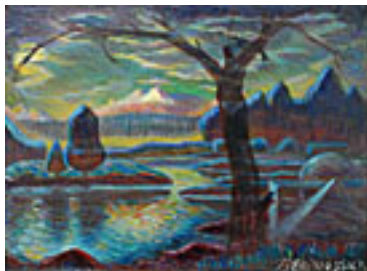
107428

MESSICK, BEN.

Low Tide, Long Beach, Late 1930's.

14 x 22 inches | Casein on paper.

Signed lower right.



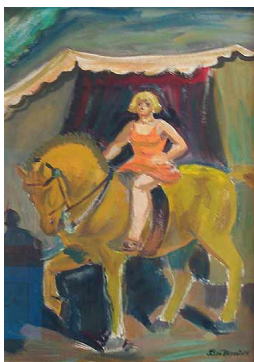
107354

MESSICK, BEN.

After Man, What Then?, c 1945

24 x 30 inches | Oil on canvas

Signed lower right



107429

MESSICK, BEN.

"Bareback Rider", Late 1930's.

30 x 21 inches | Casein on paper.

Signed lower right.



111390

NELSON, R. KENTON.

A Gable's Compliment, 2002.

12 x 12 inches | Oil on panel.

Signed lower right.



112443

PEAKE, CHANNING.

Abstract No 30 - Small Format, c. 1960.

7.75 x 7.75 inches | Gouache on

Signed Cl.



112063

PITCHER, HANK.

From Ortega Hill, Ocean View, 2002.

6 x 14 inches | Oil on board.

Signed lower left.

112465

PUTHUFF, HANSON DUVALL.

Foothills at Sunset, 1930's.

20 x 16 inches | Oil on board.

Signed lower left.

103126

REDMOND, GRANVILLE.

Windswept Trees, 1907

16 x 20 inches | Original oil on

Signed lower left.



112468
SMITH, JACK R..
The Fur Hat,
| Other.
LR.



112470
SMITH, JACK R..
General Atlas,
| Other.
LR.



112469
SMITH, JACK R..
Tsara, 1998.
6 x 4 inches | Black oil on copper.
Signed lower right.



107346
VOLLMER, GRACE LIBBY.
Sombras Pasadaros, Taos, New Mexico, 1935.
29 x 32 inches | Oil on canvas.
Signed lower left.



107242
WACHTEL, MARION.
High Sierra Lake , Circa 1930's.
14 x 18 inches | Oil on canvas.
Estate stamped.