

**113955**

BARRY, GERARD M..

A Souvenir of Santa Barbara, 1919, 1919.

11.5 x 15.5 inches | Oil on board.

Signed lower right.



**114033**

BORTOLAZZO, KEN.

Rhombus Column - Medium, 2003.

21 x 7 x 4 inches | Stainless steel with

Other.



**114038**

BORTOLAZZO, KEN.

Rhombus Column - Large, 2003.

22 x 9 x 5 inches | Stainless steel

Other



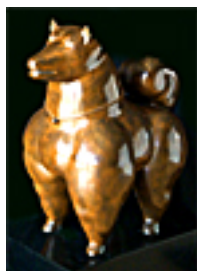
**114042**

BORTOLAZZO, KEN.

Up & Down Rhombus - Wall Mount, 2003.

29 x 9 x 12 inches | Stainless steel

Signed

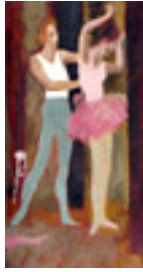


**113581**

BOTERO, FERNANDO.

Perro (Dog), 1981.

27 x 25.5 x 16 inches |



**112821**

CARMEAN, HARRY.

Final Adjustments: Dancers, 1997.

7.5 x 12.5 inches | Oil on board.

Unsigned.



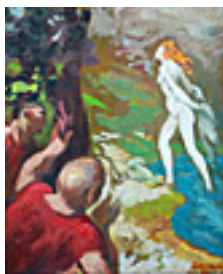
**113465**

CARMEAN, HARRY.

Lovers on Pink Blanket, 2000.

7.75 x 10.5 inches | Oil on board.

Signed lower right.



**113463**

CARMEAN, HARRY.

Susannah and the Elders, 1995.

12 x 10 inches | Oil on board.

Signed lower right.



**114216**

CARMEAN, HARRY.

Moonlight Serenade, 1965.

19.5 x 20.5 inches | Oil on Canvas.

Signed lower right.

**114212**

CARMEAN, HARRY.

Two Male Figures, 1981.

40 x 40 inches | Oil on canvas.

Signed lower right.

**111120**

CLAPP, WILLIAM HENRY.

Garden Bather and Companion,

10 x 14 inches | Oil on canvas over

Unsigned.



**114026**

CLAPP, WILLIAM HENRY.

Staring at the Sea, 1948.

16 x 20 inches | Oil on board.

Signed lower right.



**114027**

CLAPP, WILLIAM HENRY.

Sitting by the Sea, 1948.

16 x 20 inches | Oil on board.

Signed LR.

**114191**

COOPER, COLIN CAMPBELL.

New York City: "Manhattan Skyline", Dated 1923.

13.5 x 10.5 inches | Pastel.

Unsigned.

**112481**

COOPER, COLIN CAMPBELL.

City Scene, Near River, 1890's.

7 x 11.62 inches | Oil on board.

Signed lower left.

**114189**

COOPER, COLIN CAMPBELL.

Woodland, Circa 1920.

18 x 15 inches | Oil on canvas over

Signed lower left.



**114118**

COOPER, COLIN CAMPBELL.

The Alcazar, Segovia, c. 1925

18 x 14.875 inches | Oil on board.

Signed lower right.



**108511**

DE FOREST, LOCKWOOD.

Santa Barbara: Sunset, Nov. 2, 1924.

9.75 x 14 inches | Oil on board.

Signed lower left.



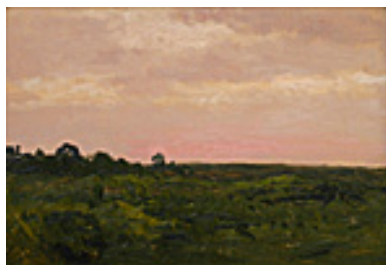
**108577**

DE FOREST, LOCKWOOD.

Santa Barbara: Dawn, ND.

9.75 x 14 inches | Oil on board.

Unsigned.



**108514**

DE FOREST, LOCKWOOD.

Santa Barbara: Mauve Sunset, Dated but illegible.

9.75 x 14 inches | Oil on board.

Signed lower right.



**114237**

DRURY, MICHAEL.

Wind Timber at Santa Barbara Point, 2003.

12 x 16 inches | Oil on panel.

Signed lower right.

**114183**

DRURY, MICHAEL.

Cottonwood at Tahoe,

16 x 11 inches | Oil on canvas.

Signed lower right.

**112611**

DRURY, MICHAEL.

Before the Rains - San Marcos Ranch, Jan. 2000.

21 x 36 inches | Oil on canvas over

Signed lower left.

**114206**

ENGLEHARD, JOSEPH JOHN.

Yosemite Valley, California, Circa 1910.

12 x 18 inches | Oil on board.



**113920**

FOSTER, WILLIAM FREDERICK.

Dark Haired Woman, circa 1940

9 x 9.5 inches | Oil on canvas over

Unsigned



**113921**

FOSTER, WILLIAM FREDERICK.

Portrait of Dressed Gentleman, Circa 1930.

14 x 12 inches | Oil on canvas.

Signed.



**113334**

**NOT FOR SALE**

FREEMAN, DON.

The Artist's House,

19.5 x 23.25 inches | Oil on canvas

Signed lower right

**113486**

GROSS, CHAIM.

Standing Female Nude, 1957.

22 x 6 x 4 inches |

Other.

**114209**

HUSTON, STEVE.

The Roper, 2003.

72 x 36 inches | Oil on panel.

Signed lower right.



**114190**

KLEINHOLZ, FRANK.

School Teacher, Children Facing Sun, 1946.

9.5 x 13.75 inches | Oil on board.

Signed and dated LR.



**113220**

LUNGREN, FERNAND.

Central Park Promenade, 1888

16 x 20 inches | Gouache on board

Signed LR



**112746**

LUTZ, DAN.

Rooster & Hens, 1955.

9 x 12 inches | Oil on canvas.



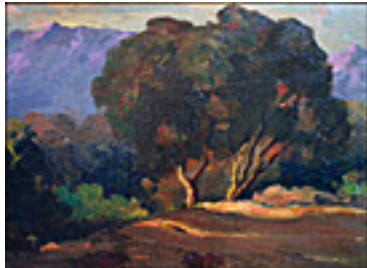
**113556**

MACDONALD-WRIGHT, STANTON.

Synchromy, Early 1950s

10.5 x 4.5 inches | Oil on Canvas on

Unsigned



**113376**

MANNHEIM, JEAN.

Landscape With Two Oaks, Circa 1925.

10.5 x 13.75 inches | Oil on Board.

Signed lower left.



**113575**

MAYHEW, NELL BROOKER.

Along the El Camino Real, Circa 1915.

6.25 x 7.75 inches | Etched

Signed and titled under frame.



**114009**

MAYHEW, NELL BROOKER.  
California Doorway,  
9.5 x 13.25 inches | Etched  
Signed lower left.

**149815**

MAYHEW, NELL BROOKER.  
California Doorway,  
9.5 x 13.25 inches | Etched  
Signed lower left.

**113692**

MAYHEW, NELL BROOKER.  
Mission San Jose, Circa 1915.  
6.5 x 14.75 inches | Etched  
Signed lower right.



**113848**

MAYHEW, NELL BROOKER.  
Ruins of San Antonio Mission, 1921  
7.25 x 12.25 inches | Etched



**113857**

MAYHEW, NELL BROOKER.  
Adobe with Four-Light Doors,  
9.75 x 13.75 inches | Etched





**113945**

MAYHEW, NELL BROOKER.

Mission San Fernando, Circa 1920

5.5 x 15 inches | Etched monotype

Signed lower left



**114717**

MAYHEW, NELL BROOKER.

Evening Eucalyptus I, Circa 1914

19.75 x 7.75 inches | Etched

Signed



**114010**

MAYHEW, NELL BROOKER.

Carmel Mission,

14.5 x 10.5 inches | Etched

Signed lower right.

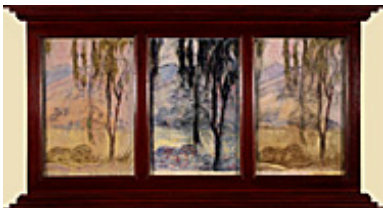


**150519**

MAYHEW, NELL BROOKER.

Mission San Juan Bautista, 1921, 1921.

10.75 x 23.25 inches | Etched



**113494**

MAYHEW, NELL BROOKER.

Eucalyptus near Hills (Triptych) , Circa 1914.

21 x 35 inches | Etched monotype.

Signed lower right.



**113493**

MAYHEW, NELL BROOKER.

Sycamore Grove in Blues, Circa 1900.

17.5 x 13.75 inches | Etched

Signed lower right.



**113560**

MAYHEW, NELL BROOKER.

Autumn Tree, Circa 1900.

19.75 x 12.75 inches | Etched

Signed and titled below image.

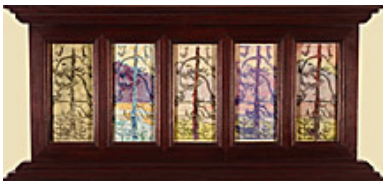


**113847**

MAYHEW, NELL BROOKER.

Mission San Juan Bautista, 1921, 1921.

10.75 x 23.25 inches | Etched



**114214**

MAYHEW, NELL BROOKER.

Evensong,

15.25 x 32.5 inches | Etched

Signed.

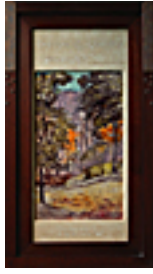


**113838**

MAYHEW, NELL BROOKER.

San Diego de Alcalá,

10.75 x 14.5 inches | Etched



**107174**

MAYHEW, NELL BROOKER.

Eucalyptus Grove, c 1915

30 x 14 inches | Etched monotype.

Signed lower left.



**160508**

MAYHEW, NELL BROOKER.

Eucalyptus Grove, c 1915

30 x 14 inches | Etched monotype.

Signed lower left.

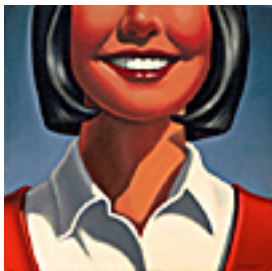
**111116**

MESSICK, BEN.

Golden Circus Horse,

22 x 28 inches | Casein on canvas.

Signed lower right.



**113882**

NELSON, R. KENTON.

Photomaton Redux, 2003.

12 x 12 inches | Oil on canvas.

Signed lower right.

**114221**

NELSON, R. KENTON.

Above the Visitors, 2003

12 x 24 inches | Oil on panel.

Signed lower right.

**111367**

NELSON, R. KENTON.

Staying Home, 2002.

24 x 36 inches | Oil on canvas.

Signed lower right.

**114222**

NELSON, R. KENTON.

After Class at Wakefield School, 2002.

25 x 30 inches | Oil on canvas.

Signed lower right.



**114215**

PARK, DAVID.

Study of Interior - 1957 (Lydia Park and Elmer Bischoff ),

11 x 9 inches | Ink wash on paper.

Unsigned.



**151710**

PARSHALL, DOUGLASS.

Bicycle Race, 1949

20 x 30 inches | Oil on board

Signed lower left

**113477**

PAYNE, EDGAR.

Pirates Cove, Circa 1930.

12 x 15.75 inches | Oil on board.

Signed lower right.



**114071**

PITCHER, HANK.

Yater and Pink Clouds, 2003.

6 x 14 inches | Oil on board.

Signed lower right.

**114139**

PITCHER, HANK.

Surfboard at Augustine, 2001.

14 x 16 inches | Oil on Board.

Signed lower right.



**114135**

PITCHER, HANK.

Surf Rider, 2002.

14.25 x 6.5 inches | Oil on board.

Signed lower right.



**113478**

ROLLINS, WARREN E..

Hopi Settlement, Circa 1895

13 x 22 inches | Oil on canvas.

Signed lower right.

**114218**

SMITH, JACK R..

Portrait of Paul Pascarella

6 x 6 inches | Oil on copper.

Unsigned.



**114220**

SMITH, JACK R..

Portrait of Kevin Canon, 2003.

6 x 6 inches | Oil on copper.

Signed lower right.



**114219**

SMITH, JACK R..

Portrait of Diane Bushburg, 2003.

6 x 6 inches | Oil on copper.

Signed lower right.



**127693**

SMITH, JACK R..

Portrait of Neil Libbert, 2003.

6 x 6 inches | Oil on copper.

Signed lower right.



**114175**

STORCH, SALLY.

City Horse before Dawn, 2003.

16 x 20 inches | Oil on canvas.

Signed lower right.



**114473**

STORCH, SALLY.

In My Pasture, 2003.

24 x 30 inches | Oil on canvas.

Signed lower right.



**114005**

STRONG, RAY.

Drake's Estero, Late 1950's.

22 x 28 inches | Oil on canvas.

Signed lower left.



**113956**

VALENCIA, MANUEL.

California Coast,

20 x 30 inches | Oil on canvas

Signed lower left.



**112754**

VOLLMER, GRACE LIBBY.

Tulips and Watercan, 1942

24 x 20 inches | Oil on board

Signed lower right



**112755**

VOLLMER, GRACE LIBBY.

Six Trees Below Cloudy Sky, 1932

20 x 24 inches | Oil on board.

Signed lower left.



**112758**

VOLLMER, GRACE LIBBY.

Valley and Mountains, 1930.

20 x 24 inches | Oil on Board

Signed lower left



**107867**

WARSHAW, HOWARD.

Horse and Saddle, 1958

4.75 x 8 inches | Pen and ink

Signed lower right



**114356**

WARSHAW, HOWARD.

Hands in Rust Orange,

10.5 x 8.75 inches | Graphite and

Unsigned.



**114208**

WARSHAW, HOWARD.

"Falling Angel", C. 1970.

7.5 x 7.5 inches | Original ink and oil

Signed lower right.

**114207**

WARSHAW, HOWARD.

"After El Greco," Two Heads, 1973.

12 x 15 inches | Acrylic painting on

Signed lower right.