

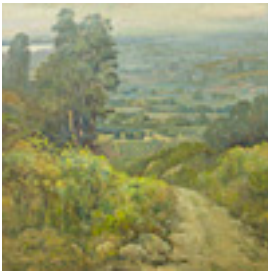
163276

ABBOTT, WHITNEY BROOKS.

Yellow Barn,

60.25 x 42.25 inches | Oil on canvas

Signed lower left



162577

ABBOTT, MEREDITH BROOKS.

Untitled (View Across the Valley), 2018

36 x 36 inches | Oil on canvas

Signed lower right



162575

BELTZ, ERIC.

Foggy Morning, 2019

33 x 30 inches | Graphite on bristol

Signed



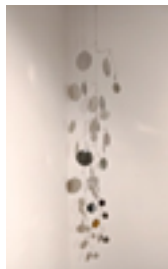
163270

BORTOLAZZO, KEN.

Rectangle Hexad, c. 1998

17 x 15 x 7.25 inches | Stainless steel

Signed

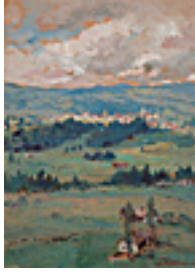


162457

BORTOLAZZO, KEN.

Cluster II, 2019

37 x 9.75 inches | Stainless steel



149221

COOPER, COLIN CAMPBELL.

Pastoral Scene, c 1900

14.5 x 10.5 inches | Gouache on

Signed lower right.



155383

DABO, LEON.

Farm Near Hudson River, c 1890

16.125 x 12.125 inches | Oil on

Signed lower right



155399

DABO, LEON.

Seascape, c 1900

17.125 x 21.5 inches | Pastel on

Signed lower right



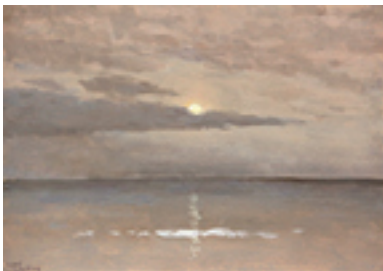
160594

DABO, LEON.

The Peak of Arran, 1906

20 x 16 inches | Oil on artist's

Signed lower left



153489

DE FOREST, LOCKWOOD.

Summer Moonlight Over Ocean, Jul. 3, 1909

9.75 x 14 inches | Oil on artist's card

Signed lower left.



154424

DE FOREST, LOCKWOOD.

Advancing Fog, Carmel (Monterey), April 5, 1909

9.75 x 14 inches | Oil on artist's card

Signed lower left



163278

DOLE, WILLIAM.

Prospect, 1965

14 x 19.5 inches | Collage

Signed lower right



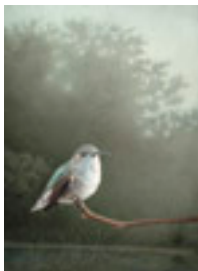
162854

FISCHINGER, OSKAR.

Socio No. 1, 1965

36 x 48 inches | Oil on canvas

Signed lower right



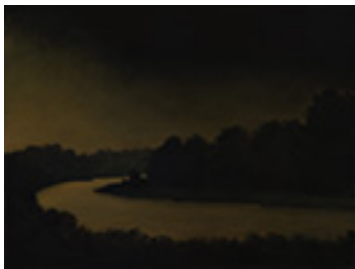
162628

MCDONNELL, SUSAN.

On Guard, 2020

12 x 9 inches | Watercolor on paper

Signed on back



161557

PETERS, CHRIS.

Night River, 2018

38 x 50 inches | Oil on linen over

Signed on back



152849

STRASBURG, NICOLE.

Morning Estuary, 2009

48 x 24 inches | Oil on birch panel.

Signed on back.



150127

VEDDER, SARAH.

Carpinteria Field, 2005

30 x 44 inches | Oil on linen.

Signed lower left.