



165600

ARNOLDI, NATALIE.

Break, 2023

36 x 24 inches | Oil on canvas

Signed on back



165420

BERGMAN, CIEL.

Untitled 1 -The Illusions Of (Full of Knowing), 1988

20.25 x 117.75 inches | Oil on canvas

Unsigned



157101

DABO, LEON.

Sun and Mist, New Milford (AKA Moonlight at New Milford)

30 x 34 inches | Oil on canvas

Signed lower right



153755

DE FOREST, LOCKWOOD.

Tonal Moon, 1902

9.75 x 14.125 inches | Oil on artist's

Signed lower left



165650

DREWES, WERNER.

Enfolding, 1984

36 x 44 inches | Oil on canvas

Signed lower left



165596

FISCHINGER, OSKAR.

Centrifuge, c. 1957

41 x 27 inches | Oil on board

Signed lower right



164208

GOLDYNE, JOSEPH.

Waterfall Drawing 3, 2021-22

17 x 13.25 inches | Charcoal on

Signed lower right



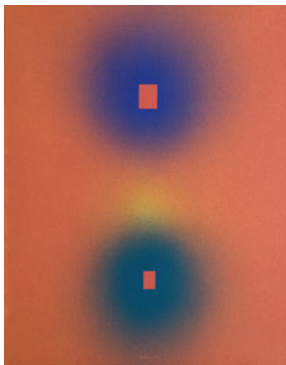
165598

HUFF, NATHAN.

Peaceable Kingdom, 2022

55 x 34 inches | Acrylic Gouache on

Signed



165665

JONSON, RAYMOND.

Polymer No. 12, 1967

30 x 24 inches | Acrylic on board

Signed lower center



165652

JONSON, RAYMOND.

Polymer No. 26, 1974

30 x 27 inches | Acrylic on board

Signed lower center



165597

PARRISH, R. NELSON.

Miramar, 2023

94.5 x 4 x 2.75 inches | Mixed media



165602

PAZDERKA, TOM.

Ex Nihilo, 2023

40 x 40 inches | Ash, charcoal, oil on



162028

PETERS, CHRIS.

Symbiosis No. 6, 2018-2019

16 x 20 inches | Oil on panel

Signed



157086

PITCHER, HANK.

Sunrise Wave, 12/2003

6 x 14 inches | Oil on board

Signed lower right



165661

RASMUSSEN, ALEX.

Equinox, 2023

78 x 6 x 2.5 inches | Anodized

Signed on back



165599

RENDON, MARIA.

Y que venga la calma, 2023

36 x 24 inches | acrylic on flashe on

Signed on back



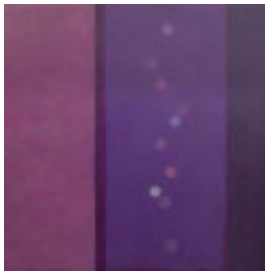
165604

WIESBLOTT, MONICA.

Ruminations of Earth and Sky, 2023

10 x 16.5 inches | photopolymer

Signed on back



164554

WINFIELD, CHRIS.

Untitled, c. 2018

24 x 24 inches | Acrylic on canvas

Signed on back